

Otuhau News

THE TIKIPRIDE COMMUNITY MAGAZINE

Promoting Wellness in Our Community • Edition 33 • Winter 2025



The Northland Football Hub is officially open!

On Saturday 26 April, the Tikipunga Football Club marked a major milestone with the official opening and blessing of the brand-new Northland Football Hub.

A special blessing ceremony led by Joby Hopa from Pehiāweroi Marae, was attended by members of Northern Region Football (NRF), Northland Football Club (NFC), Tikipunga Association Football Club (TAFC), along with representatives of our sponsors, our project partners, and the Whangārei Mayor - Vince Cocurullo. It was a fitting and meaningful way to recognise the hard work, collaboration, and community spirit that made this project possible.

This incredible new space includes six new changing rooms, renovation of the main clubrooms (now known as the Gibson Lounge), a new conference space (named the Nysen Lounge), a brand-new covered deck overlooking the fields, new offices, storage areas, and smart technology for development sessions.

The club wishes to extend our deepest thanks to Scope, our project managers, and Canam (construction company) for delivering the project on time and within budget.

A special thank you also goes out to the Steering Committee — Dave Alabaster, Andy Bax, Vicki Campbell, Trevor Griffiths, James Hynes, Ben Lee, Don McDonald-Spice, and Bryce Taylor. This team committed many long hours voluntarily to this project. Their commitment, passion and relentless drive were critical in pushing this rebuild across the finish line.

Continued on page 2



Your local Tikipunga salesperson

Lynne Meldrum

"We recently sold our family home with Ray White. Our agent Lynne was very professional from start to finish. She made the process very easy, adapted to our needs efficiently and we had excellent communication throughout the processes. We are very happy with the outcome of our sale and wouldn't hesitate to recommend Lynne to others - in fact I already have!"

lynnemeldrum.co.nz

Goodie Leith Realty Limited Licensed (REAA 2008)

CONTENTS

The Northland Football Hub..... 1
 Emergency numbers 2
 Tikipunga Community Trust 3
 Whānau at the Falls pics..... 3, 19, 20, 24
 Inspiring dreams through movement..... 4
 Vote in Māori Ward poll 5
 Matariki events 6
 Tikipunga Real Estate report 7
 MP for Whangārei Hon. Dr Shane Reti 8
 Tikipunga Football Club 9
 Celebrating rangitahi success 10
 The Silver Festival 2025 11
 Measles warning..... 11
 Welcome to Whangārei..... 12
 Number Works and Words 13
 Fire can kill you in three minutes..... 14
 More development on the way..... 15
 Whangārei Junior Open 16
 Tamariki Time..... 17
 Where are our local defibrillators 18
 Job Explore 2025..... 19
 Pop-up Cycling Track 20
 Mayor's Message 21
 Whangārei News and Updates 22
 Arrests made in Tikipunga 22
 Regular Events..... 23
 Winter Diary 24

◀ Continued from page 1

This project began as a dream back in 2012: to create a new football space in Northland that would bring our football whānau together, encourage growth, and promote an inclusive, welcoming environment for all players. In 2017, a Heads of Agreement was signed by NFC, NRF, and TAFC - a major step towards realising this vision.

Thanks to the generous support of our funders - Northland Regional Council, Lotto New Zealand, Foundation North, Grassroots Trust, Sport NZ and the Whangārei District Council - they made this dream become a reality.

Do you have a Tikipunga story or community news to celebrate in the Otuihau News? Stories of 250 words or less are due for the next Otuihau News by 18 August 2025.
 Please get in touch via our TikiPride Facebook page or email margie.kent9@gmail.com

Published by MegaType Publishing on behalf of the Tikipunga Community Trust
 Editor: Margie Kent margie.kent9@gmail.com
 Design: Meg McIsaac graphics@megatype-publishing.co.nz
 09 434 0096

EMERGENCY NUMBERS

Aviva: For free 24/7 support line, call 0800 AVIVA NOW (0800 28482 669)
Elder Abuse Helpline: 0800 32 668 65 Open 24 hrs text: 5032, email: support@elderabuse.nz
Family violence info: 0800 456 450
Gandhi Nivas: Supporting men to be free from violence 0800 426 344
Hey Bro helpline: Supporting men to be free from violence 0800 HeyBro (439 276)
Need to talk? Free call or text: 1737 for mental health support from a trained counsellor
Oranga Tamarii: For concerns about children and young people 0508 326 459, email: contact@ot.govt.nz
Safe to Talk: Sexual harm helpline 0800 044334, text: 4334, email: support@safetotalk.nz
Sensitive Claims ACC: 0800 735 566
Shakti - for migrant and refugee women: 0800 742 584 Open 24 hrs
Shine domestic abuse services: 0508 744 633 Open 24 hrs Live webchat is also available
Rape Crisis: 0800 88 33 00
Victim Support: support for men and women 0800 842 846 Open 24 hrs
Women's Refuge crisis line: 0800 733 843 Open 24 hrs
Youthline: 0800 376 633, free text: 234, email: talk@youthline.co.nz

And there's even more to come - we are excited to announce that the construction of a new artificial turf pitch is scheduled to begin at the end of this year, right outside our brand-new deck and clubrooms!

This hub is not just for today - it is a legacy for future generations of players, coaches, referees, and the wider community to come. We look forward to hosting tournaments, training, and events that continue to grow and strengthen our football family.

Welcome to the new Northland Football Hub - the home of football in the north!

Contributed by Leonie Osborne, Tikipunga Association Football Club

This newsletter is sponsored by
 **FOUNDATION NORTH**
 Pūtea Hāpai Oranga
 Funding to Enhance Lives

TIKIPUNGA COMMUNITY TRUST

OPERATING AS TIKI PRIDE

(Providing for the Promotion of Wellness in the Tikipunga Community)

Whānau at the Falls 2025



TOP: Mana o te Hula

BOTTOM: Hikurangi School Pasifika performers

Once again, over a thousand people enjoyed the activities and vibes at Whānau at the Falls on 29 March this autumn.

This was a few less people than last year, but that was to be expected with the other attractions on the same day, such as Te Āhureaka o Ngāti Hine (the Ngati Hine Festival) and the Cancer Society's Relay for life.

The Trust is very thankful to all those who participated and made the day the success that it was. Special thanks go to the Toapuwhānau who helped with a number of things, including the pre-event set up, provision of gazebos and facilitating the participation of the Pasifika Community.

It was great to have the Te Horo School and the Hikurangi School Pasifika performers there again. It would be lovely if we could have performances from groups belonging to Tikipunga schools at the 2026 Whānau at the Falls, as we have done in the past. There were certainly many Tikipunga children there on the day this year.

One of the great finds at this Whānau at the Falls day was Piripi Burt, who co-MCed the day with Michael Kake from Pehiāweri Marae.

Piripi successfully engaged the interest of the children, as well as adding to the music mix with his great singing repertoire. He expects to be available for Whānau at the Falls again in 2026.

Tikipunga Community Trust (Tiki Pride) now meets bi-monthly

Members of the trust believe we can get our business done just as effectively by meeting every second month, instead of monthly. The Trust's main projects are the annual Whānau at the Falls community day, opening the Tikipunga High School pool to the community, running the WDC's Summer Safe project at Otuihau/Whangārei Falls and producing this quarterly magazine, Otuihau News.

If you would like to support these projects or have another community project in mind for Tikipunga, please come to our next meeting and see if we can work with you. Our meetings for the rest of this year are scheduled for - 9 June, 11 August, 13 October and 8 December, starting 4.30pm at Te Ora Hou, 104 Cork Road.

Contributed by Kathryn McKenzie, Secretary, Tikipunga Community Trust (Operating as Tiki Pride)



Te Horo School Pasifika group

Inspiring dreams through movement

This year, Tikipunga-based charity I Have a Dream has been championing the power of movement – not just to support physical wellbeing, but as a way to build confidence, focus, and a sense of possibility. Through everyday activities and inspiring experiences, the organisation is helping young people take meaningful steps toward the futures they imagine.

The organisation actively supports over a thousand programme participants (Dreamers) in four local schools: Tikipunga High School, Tikipunga Primary, Totara Grove Primary, and Te Kura o Otangarei. Its dedicated team of Navigators is tasked with inspiring dreams and enabling futures by delivering consistent, long-term support to each Dreamer.

A great example of this work came to life in January during a holiday programme trip to Sandy Bay. Year 5 Navigator Bailey Beddis took a group of Dreamers for a day of surf lessons with Tutukaka Surf. One Dreamer, Gian, quickly stood out.



Dreamers about to hit the waves



Year 5 Navigator Bailey Beddis and Dreamer Gian

"I noticed right away that he had an instinctive feel for surfing, even on the shore during the basic lesson," Bailey said. "Sure enough, he was incredible – he managed to stand up on his board

within his first few attempts. His behaviour during the session was outstanding; he was calm, focused, and completely in the moment."

Recognising Gian's passion, Bailey stepped in to support him further. She sourced a second-hand surfboard, teamed up with ReSport Charitable Trust to provide a wetsuit, and accessed the I Have a Dream Matakokiri Fund for private lessons. What began as a fun day at the beach turned into a powerful step toward a new dream.



Year 10 Navigator Rose Welsh finishing the Beach to Basin with her Dreamers

In March, that same spirit flowed through the Chilltech Beach to Basin event, where I Have a Dream was named a charity partner. Dreamers and Navigators joined thousands in the iconic run/walk, showing up with energy and purpose.

To make the journey even more meaningful, Tikipunga High School Year 10 Navigator Rose Welsh and her participating Dreamers encouraged participants to write their dreams at each 1km mark on custom t-shirts. From "swimming with dolphins" to "learning the electric guitar," the messages reminded everyone to keep moving forward.

Whether on a surfboard or a footpath, movement is one of the many ways I Have a Dream walks beside its Dreamers – helping them believe, persevere, and turn dreams into futures.

Contributed by Abbey Cameron, ihaveadream.org.nz



Voting in the Māori Ward Poll

Everyone is eligible to vote on the Māori Ward Poll - not just those on the Māori roll

When more people participate in elections, our local governments become more representative, fair, and effective. Being a good resident means using your voice, and standing up for what you believe in. Voting is one of the simplest yet most powerful ways to do just that. The Mayor explains the new STV voting process for councillors on page 21. On this page we discuss the poll.

Everyone votes on the poll

At the Local Elections 2025, everyone (not only those on the Māori roll) will be asked via a postal voting process to vote in a poll on whether to keep or remove the Whangārei District Māori ward, and whether to keep or remove the Northland Regional Council Māori constituency. This poll is, in legal terms, a binding referendum.

This is an important question for all residents and ratepayers, regardless of ethnicity or which electoral roll you are on. The outcome of the poll will decide the future of Māori wards and constituencies for our district and region. The questions for the poll will be simple and easy to understand: 'I vote to keep the Māori ward / constituency' or 'I vote to remove the Māori ward / constituency'.

The result of the poll will decide if Māori continue to be

represented on the councils - including both the Whangārei District Council and the Northland Regional Council.

You need to be enrolled as a resident and/or ratepayer to vote in the poll.

Use the Elections Hub

Whangārei District Council will have an 'Elections Hub' open on the ground floor of Te Iwitahi, the council office building on Rust Avenue, from 4 July until 11 October. The Hub will be accessible to everyone, and will be staffed throughout the election period to help anyone with any questions relating to the 2025 local elections - including helping people to enroll and teaching people about what to expect in the process.

What will happen?

The local elections are conducted by postal vote. You will receive your voting papers and poll questions for Whangārei District Council and Northland Regional Council in a voting pack addressed to you and mailed to your home address. If you do not receive your voting papers by Monday 22 September 2025, please arrange to cast a special vote by contacting the Electoral Officer for Whangārei District Council, Dale Ofsoske: Phone: 09 973 9212 or 0800 922 822, Email: dale@electionservices.co.nz



Ko Puanga te whetū i ārahi i ā Matariki ki te Tau Hou (Puanga is the star that guides Matariki to the New Year).

Whangārei is once again hosting a month-long Puanga Matariki Festival which ends on 24 Hune (June). The festival is a special series of cultural events for people to come together and celebrate the Māori New Year, Te Tau Hou Māori. This was traditionally the time to plant trees, prepare the lands for crop growing and renew links with whānau and friends. It's also a time to remember, reflect and honour loved ones who have died since the constellation's last rising; and to plan for the year ahead.

If you want to know more about all the Festival events, then have a look at the Council's website www.wdc.govt.nz/Events/Festivals/Puanga-Matariki-Festival. Three of the most interesting celebrations for us this year included:

E Tū Ngahere – Puanga Exhibition

Saturday 31 May 2025, 10am to Tuesday 24 June 2025, 4pm at the Hihiaua Cultural Centre, 56-58 Herekino Street (closed on Mondays).



This exhibition is a collection of local and Māori artworks focused on the theme 'E Tū Ngahere'. E tū ana te ngahere i runga i te mana o te kōtahitanga (In the

forest, trees interlock their roots beneath the soil, creating a resilient network that can withstand strong weather). When we strengthen our whānaungatanga, these connections become our foundation, allowing us to stand tall, unwavering and determined against life's challenges. This is a free exhibition, koha appreciated.



Building Bridges Between Puanga Matariki and Astronomy

Saturday 7, 14, 20 and 21 June 2025, 7-9pm, Planetarium North, 500 State Highway 14, Maunu

Join us for a tour of the night sky and see where Puanga Matariki rises in late June as dawn breaks. Adults \$15, Students \$10. Bookings essential.



Light the Way for Hato Hone St John Whangārei

Tuesday 24 June 2025, gather at 5pm, walk at 6 to 6:30pm, Canopy Bridge, Town Basin

This is a community event dedicated to bringing people together in support of St John - New Zealand's frontline of medical response, providing ambulance services, first aid training, event medical services, AEDs (defibrillators), first aid kits, medical alarms and more. This event aims to promote awareness, engagement and fundraising while creating a fun, family-friendly atmosphere. Wear anything that glows – fluorescent clothing, glow-in-the-dark accessories or LED items. A free event, koha appreciated.

WHAT'S HAPPENING IN OUR LOCAL *market?*

market?

With Shane Burns

Q: How's the market?

A: Which market? There are markets within markets and what we read and hear in the media doesn't always reflect what's going on locally.

Around NZ there are generally more people wanting to sell properties than willing or able to buy them. Prices have therefore continued to bumble along and gently slide, despite falling interest rates. Meanwhile, at the time of writing, REINZ information shows that Whangarei city and fringe area has seen an increase in annual sales, 1291 up from 1231 a year earlier.

Significantly, there are far less properties for sale than at the same time last year, down from around 500 to 400, including a lot more sections advertised for sale, up from 65 to 90, so the number of houses for sale has dropped by around 125 or 25%. As an aside, around 80 sections sold in a recent 12 month period. They can take a while.

In Tikipunga, there were 156 sales compared with 138 the year before – that's a 13% increase - yet the median price dropped from \$686,845 to \$611,345. TradeMe currently has around 30 Tikipunga properties listed for sale.

RateMyAgent has plotted house sale prices like this:



Despite prices falling, RateMyAgent reports that sellers in Whangarei are some of the happiest in NZ; 76% of sellers in Whangarei reported that their sale price either exceeded or met their price expectations. Go us!

Q: Is it a good time to be buying or selling?

A: It depends on which market you are participating in but there are plenty of people looking to buy and sellers with realistic price expectations are succeeding.

The decision to sell or buy really comes down to your personal circumstances. For free, objective guidance to thoroughly consider your options, please call me. I will be happy to help.

Q: Real Estate?

A: Shane BURNS



Licensed Real Estate Salesperson & Auctioneer
No 1 Individual Salesperson 2023/24, 2024/25
 022 435 6559 | shaneburns.co.nz
shane.burns@harcourts.co.nz



www.shaneburns.co.nz

Harcourts Optimize Realty Ltd Licensed REAA 2008

MP for Whangārei

Dr Shane Reti



Whangārei residents have recently witnessed significant developments in local transportation infrastructure, promising to enhance travel efficiency and safety: the national government's plan for a

four-lane Northland Expressway over the Brynderwyn Hills, and something a little closer to home, the speed limit increase on the Western Hills Drive.

In a move aimed at improving traffic flow and reducing congestion, the speed limit on the Western Hills Drive (part of SH1) has reverted to 70 km/hr, which will be great news for northern suburb residents travelling to and from the city. This change, effective from May 2025, was part of a broader strategy to streamline vehicular movement through one of Whangārei's busiest routes.

The decision to raise the speed limit was

based on extensive traffic studies and safety assessments conducted by Waka Kotahi NZ Transport Agency (NZTA). These studies indicated that the road's design and current traffic conditions could safely accommodate the higher speed limit without compromising safety. NZTA has also implemented additional safety measures, including improved signage and road markings, to ensure drivers are well-informed and can adapt to the new speed limit seamlessly. NZTA has assured the public that it will closely monitor the impact of the speed limit increase and adjust if necessary.

In a landmark announcement, the national government has unveiled plans for a new four-lane Northland Expressway that will include a new route over the Brynderwyn Hills.

This expressway will form a safer, more direct link between Whangārei and Auckland. The proposed corridor will span multiple sections from Warkworth to Whangārei and is expected to significantly reduce travel times, enhance road safety, and support economic growth by improving connectivity between Northland and the rest of the country.

Construction of the first stage, from Warkworth to Te Hana, is expected to begin in late 2026. The wider project will involve substantial investment in infrastructure, including new bridges, tunnels, and interchanges. The Government has committed to ensuring minimal disruption to local communities and the environment during the construction phase.

These developments mark a significant step forward for Whangārei's transportation network, promising to make travel safer and more efficient for all road users.

Adding to the buzz, Whangārei recently hosted Hon. Mark Mitchell, Minister of Corrections, Minister for Emergency Management and Recovery, Minister for Ethnic Communities, Minister of Police, and Minister for Sport and Recreation. Minister Mitchell engaged with the public at two functions and was well received. Contact my office if you would like an invite to come along to similar events.

HON DR SHANE RETI QSM
MP for Whangārei

Working together



Fun, friendship and football for everyone

Amy Campbell - coach, role model, 'older sister'

• **Coaching philosophy: creating a safe, fun, and inspiring environment for young girls in football**



In March this year, Amy Campbell of Tikipunga Football Club won the Northern Region Football award 'Celebrating Women Coaches in Girls and Women's Month Award'. From Cape Reinga to the Bombay Hills, and representing over 40,000 players, this award from the Northern Region Football federation is a serious nod to Amy's coaching abilities.

Now, as a coach, senior women's player and committee member at Tikipunga FC, Amy is working to create that same welcoming space for the next generation of young female footballers.

"I wanted to give them something to look forward to," Amy shares. "A safe space to hang out with their mates and enjoy football."

Like many female coaches, Amy faced early hurdles, especially in gaining respect from parents - particularly male parents.

"I hadn't done any coaching before, so I felt like I wasn't 'good' enough. But I just had to push through it and remind myself—I can do this."

One of Amy's key coaching values is giving her players a voice. She encourages them to ask questions, make suggestions and be part of the decision-making process.

"Giving them the confidence to speak up now will hopefully help them find their voice in other areas of life as they grow older." And

she emphasises that success isn't just about winning. "Knowing how to deal with that is a life lesson that will help them beyond football."

Amy sees herself as an older sister to her players, someone they can trust, celebrate with and confide in.

"I want them to remember me as the fun coach. The one who didn't growl all the time but still taught them things. At the end of the season, when you're feeling exhausted, you get a thank-you card from your girls, and that makes it worth it."

Amy's message to future female coaches? "The girls love it, they look up to you, and you get an opportunity to change their lives - who wouldn't want that?"

Contributed by the Tikipunga Football Club



Celebrating success of our rangitahi

2025 Head Boy at Tikipunga High School, 17 year-old Awatea Poutai, has been awarded a First Foundation Scholarship, and is now headed to Otago University to study Product Design and pursue his love of art.



Poutai said he had been supported by Tikipunga High School and I Have a Dream Trust, which matches students with dedicated mentors who help them overcome challenges and transition from school to university.

He was assigned community-based mentor, Dave Cotty from Mangawhai who took Poutai under his wing, taking him on excursions including to musicals, art galleries, museums and sports events. Awatea was also supported by I Have a Dream navigator, Lucia Kotze, who helped him pursue the First Foundation Scholarship, which will provide financial support towards his university costs over three years.

Poutai said his family – none of whom had gone to university – were extremely proud when they learned of his award. His mum’s love of learning was passed down to him, he said and, “My dad is a hard worker. He has a great work ethic.” So combine the two and Poutai said that describes him.

He added in his own belief to always do what he can and make it the best he can do.

“That’s what has got me through ... because I try my hardest,” he said. Awatea was looking forward to an “exciting” new year in 2026 and encourages other young people to “Just try, that’s all you can do really”.

Our congratulations go out to you, Awatea.

Content used with permission, The Northern Advocate

The First Foundation 2025 Awards



There wasn’t a dry eye in the room at the First Foundation 2025 Awards Ceremony in Auckland when Awatea Poutai’s father, Wayne, performed a powerful haka in honour of his son’s achievement.

Awatea, Tikipunga High School Head Boy and I Have a Dream (IHAD) Dreamer, along with fellow Year 13 student and Dreamer Trent Bowater, were among 91 exceptional students from across Aotearoa awarded the prestigious First Foundation Scholarship.

First Foundation is a charitable trust dedicated to promoting educational success for young New Zealanders from disadvantaged backgrounds. This unique 4-year scholarship offers extensive support, including mentoring, leadership training, pastoral care, and paid work experience. It’s designed as a hand-up, not a hand-out, with a strong focus on culturally responsive support.

After visiting Dunedin with I Have a Dream last year, Awatea and Trent were inspired to study in Otago next year. Awatea has chosen to attend Otago Polytechnic to study Product Design, while Trent is still deciding whether to study medicine at either Otago or Auckland University.

Based on information from <https://ihaveadream.org.nz/>

The Silver Festival 2025

Registrations are now open for this year’s festival which will begin on International Day of Older Persons, 1st October, and run for two weeks.

Supported by community groups and clubs in the district, each event offers an opportunity for seniors to explore what’s on in their area, to try something new, to meet new people, and to have fun being active and creative.

The festival is facilitated by the Whangārei District Council, supported by our Positive

Ageing Advisory Group and is part of our wider commitment to being an Age Friendly Community.

On the Council website <https://www.wdc.govt.nz/Events/Festivals/Silver-Festival> you’ll find registration forms, funding options, suggestions for event planning and a link to last year’s booklet for guidance in how to include your group in the Silver Festival.

Celebrate Age, Let’s Engage!

Measles warning

As you may have seen in the news, a measles case in Auckland sparked concern. That’s because immunity levels across New Zealand are low, and a single case of measles could start an outbreak.

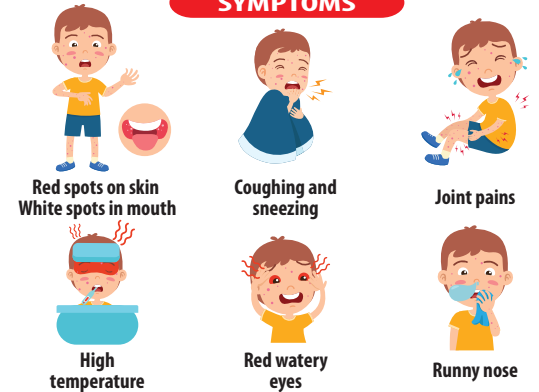
Measles is a serious illness that spreads easily and can make people sick, especially babies and young children. The long term impact of measles can also be very serious, including immune system suppression and rare, but potentially fatal, neurological complications. Thankfully, there’s an easy way to protect yourself, your tamariki (children), and those most at risk.

The MMR (measles, mumps and rubella) vaccine is highly effective, offering long-lasting protection against measles. Very few people who have had both doses of the MMR vaccine get measles. If you’re unsure whether you or your child has had both doses, it’s best to get immunised. It’s safe to have an extra dose of the MMR vaccine. Health authorities consider people born before 1 January 1969 immune, as measles was widespread in New Zealand before the vaccine became available, and most people caught the virus during childhood.

The MMR vaccine is FREE for anyone 18 years or under and those eligible for free healthcare in New Zealand. Please see your local pharmacist or doctor for advice.

MEASLES

SYMPTOMS



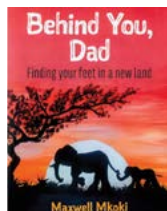
PREVENTION



LONG TERM COMPLICATIONS



Welcome to Whangārei



'Kia ora' and 'Hello' are just two of the everyday greetings we're familiar with, but 'Kia orana', 'Malo e lelei', 'Ni Hao', 'Hola', 'Talofa', 'Namaste', 'Bonjour', 'Bula', 'Ola' and 'Kon'nichiwa' are just a few of the many other languages spoken by this country's ethnic communities.

New Zealand is now recognised as one of the most culturally diverse places in the world, so what is it like to arrive as an immigrant in a different country from your own, hoping to establish a new life?

Maxwell Mkoki, originally from Zimbabwe, has described his experiences in his book *Behind You, Dad - Finding Your Feet in a New Land*, after settling here with his young family.

In a conversation between himself and his son, Maxwell explains why he felt it was important for them to leave the African homeland of their birth, and how he made the decision to settle here. They talk about some

of the challenges they both faced during the journey, how they've adjusted to living in a new cultural environment, and why they must now build on their experience to move confidently into the future.

Here in Whangārei, new migrants are offered support from organisations such as non-profit Multicultural Whangārei, which provides a range of services at their Bank Street centre, including English language classes and employment assistance. Each year they also organise, with council support, Multicultural Day. This is hosted by Whangārei Central Library, which was identified in a survey of 285 Whangārei newcomers as being 'the most welcoming of all public spaces in terms of cultural appropriateness, inclusion and accessibility', and 'a safe place to be and to make new friends'.

This year's Multicultural Day will be on Saturday 7 September from 10am-2pm, and Welcoming Week will be held from 12-21 September. These are just a few of the very popular events on the city's multi-ethnic calendar, and the community is welcome to come and join in. More details can be found on facebook.com/multiculturalWhangarei/

How to help your child overcome challenges in Maths and English

Watching your child grow in confidence and skill is one of the greatest joys of parenting. But when they start to struggle with core subjects like Maths and English, it's normal to feel concerned - especially as assessments approach.

At NumberWorks'nWords, we specialise in supporting students of all ages and abilities, helping them overcome these hurdles with confidence. Our expert tutors work in line with the school curriculum to build core skills, boost motivation, and turn frustration into progress.

Read on for some of the simple, effective strategies we use every day in our centres so you can feel empowered to support your child at home too.

1. Break It Down

Big problems can feel overwhelming. Help your child by breaking tasks into smaller, manageable steps like brainstorming, drafting, and editing for writing, or identifying key numbers and formulas in maths.

2. Create a Calm Learning Space

A quiet, organised area helps children focus. Set up a study space with all necessary tools, and keep it free from distractions.

3. Encourage a Growth Mindset

Remind your child that intelligence grows with effort. Praise persistence and improvement, not just results. Mistakes are learning opportunities, not failures.

4. Make It Fun

Games and creative activities can boost engagement. Try card games for mental maths or story dice to spark English writing ideas. Learning feels easier when it's enjoyable.

5. Use Real-World Connections

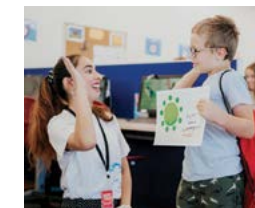
Help your child see the value of learning by applying it to daily life. Involve them in cooking (fractions), shopping (budgeting), or writing letters and journals.

6. Be Patient and Positive

Children thrive with encouragement. Acknowledge their effort and avoid putting pressure on perfection. Celebrate small wins to build momentum.

7. Talk About Mistakes Openly

Help your child reflect on what went wrong and how to improve next time. This builds resilience and critical thinking.



8. Stay Calm Yourself

Your attitude matters. Stay positive about learning and model healthy ways to manage stress - your child will follow your lead.

We're Here to Help:

NumberWorks'nWords offer expert, tailored tutoring that matches your child's needs and school curriculum. Whether they need help catching up, keeping up, or getting ahead, our team is here to guide them every step of the way.

Ready to get started?

Book a free, no-obligation assessment today and see how we can help your child succeed!

Contributed by Mike Smith, NumberWorks'nWords
<https://www.facebook.com/NumberWorks'nWords>

Bowel screening is easy

If you're aged 60 to 74, you can have free bowel screening. A bowel screening test kit will be sent to your home every two years. This simple and clean test can help find bowel cancer early when it can often be successfully treated.

When you get the test, just do it! It could save your life!

To find out more, go to [timetobowelscreen.nz](https://www.timetobowelscreen.nz) or email Bowel.Screening@northlanddhb.org.nz

Do it for your whānau!



Free - Do it at home



Te Kāwanatanga o Aotearoa
New Zealand Government

Health New Zealand
Te Whatu Ora

Time to screen
National Bowel Screening Programme

New Entrant to Year 11

Your children are amazing already. We just help them prove it.



ENGLISH & MATHS
Free assessment
Book now!

Whangarei Ph **438 1144**
email whangarei@numberworks.com
[numberworks.com/nz](https://www.numberworks.com/nz)

NumberWorks 'nWords | **40 YEARS** TUTORING

A House Fire can kill you in less than three minutes



Did you know smoke from a house fire can kill you in less than three minutes? That's why it's essential to have an escape plan and to practice it regularly with your whānau.

There are three easy steps you need to take to protect your whānau in the event of a fire in your whare so you can all get out within minutes:

- Tahi: Install smoke alarms in every bedroom, hallway and living area.
- Rua: Plan two ways out.
- Toru: Agree on a safe meeting place.



Remember to check your smoke alarms are working once a month by pressing the button.

Need a hand getting your 3-Step Escape plan sorted? Answer eight quick questions about your home on the [Fire and Emergency website: https://www.fireandemergency.nz/home-fire-safety/3-step-escape-plan/](https://www.fireandemergency.nz/home-fire-safety/3-step-escape-plan/)

Contributed by Fire and Emergency New Zealand, [fireandemergency.nz](https://www.fireandemergency.nz)

FIRE ESCAPE PLAN FOR THE WHARE

- 1 INSTALL SMOKE ALARMS IN EVERY BEDROOM, HALLWAY AND LIVING AREA**
- 2 PLAN TWO WAYS OUT**
- 3 AGREE ON A SAFE MEETING PLACE**

YOUR WHĀNAU ARE NOW PREPARED TO SURVIVE A FIRE IN YOUR WHARE

FIRE AND EMERGENCY . NZ / ESCAPE

GJ GRAEME JOHNSON
JEWELS & TIME

Clocks
Finest Collection in Northland
Timeless, Classic & Modern

Watches
Men's, Women's and Kid's
Time for all generations

Jewellery
Rings, Pendants, Earrings & Bracelets
Timeless memories

Repairs
Specialists in all watch, clock & Jewellery repairs and restoration

435 2145
531 Kamo Road, Kamo
www.graemejohnsonclocks.co.nz

Thieves end up in hot water

A pair of alleged burglars in the middle of removing a hot water cylinder and copper piping from a Tikipunga property were caught in the act.

Police were alerted to a burglary in progress at a property undergoing renovation on Thomas Street when the homeowner reported seeing, through CCTV security cameras, two people allegedly inside the premises removing items from the home.

Whangārei Area Prevention Manager, Senior Sergeant Dave Wilkinson, says "The Police Dog Unit, Delta, has responded and apprehended two people allegedly trying to run out the back of the property with tools. One person suffered a minor dog bite as a result."

A 32-year-old man and an 18-year-old woman were charged with burglary.

Summarised from NZ Police press release



More development on the way

The Springs Flat roundabout and several other major roading projects, which will help Whangārei's Northern Growth Area to develop, have been given the go-ahead by Whangārei District Council. This growth will have a direct impact on the northern Tikipunga area.

Council has awarded a \$4.3 million contract for Stage One for earthworks and drainage for the roundabout on State Highway 1 to local firm BDX. Work began in April and will be completed in November, with the year-long Stage 2 for the main roundabout construction project due to start in December.

Council has also approved an infrastructure agreement with Springs Flat Ltd for the construction of the Springs Flat Road extension "There are also plans for a new supermarket and shopping centre next to the roundabout," said Council's Infrastructure Committee Chairman, Simon Reid. "This area has been growing fast. The increased population is starting to put major pressure on traffic flow, and the current roading situation was threatening to constrain development and growth. "This work will enable this area to flourish at some point in the future." The new roundabout at Springs

Flat Road will provide safer connections to State Highway 1 from Te Kamo, and access for future housing planned for Te Kamo East.

The roundabout will stream traffic from the west along Springs Flat Road onto the state highway. Traffic from the east will flow down Beacondale Place onto the new Alcoba Street extension and then connect onto the roundabout.

Housing development in the area is being driven by developers. While Council doesn't do the development, their role in establishing and maintaining the underlying infrastructure is vital as it enables development to occur.

Much of the land in the Gillingham Road area north of the Waitaua Stream in Tikipunga is zoned for residential housing and hasn't been developed because of the old narrow bridge. The new bridge will provide access to the east and north for development. The \$4.2 million bridge construction contract has been awarded to United Civil Construction and the bridge will be completed in December.

The Springs Flat roundabout and Gillingham Road bridge projects are supported by \$10.3 million in Crown funding contracted to Council through the Infrastructure Acceleration Fund.



WHANGAREI GOLF CLUB with support from NORTHLAND EAGLES
presents

WHANGAREI JUNIOR OPEN



FRIDAY 4TH JULY 2025
at 9.00AM

GROSS-NET-STABLEFORD

18 HOLES (BLUE/WHITE) \$25 / 18 HOLES (RED) \$15 / 9 HOLES(PURPLE) \$10

BOYS- 2 DIVISIONS

BLUE (12 HANDICAP OR LESS) -GROSS
WHITE-GROSS/NET/STABLEFORD

GIRLS 1 DIVISION

RED-GROSS/NET/STABLEFORD

JUNIOR

PURPLE-GROSS/NET/STABLEFORD

Enter online



Registration closes 21st June at 5pm. Draw posted 2nd July at 5pm on the WGC Facebook page.
Payment to be made prior to commencement of the event.

Register via the golf shop or online (via QR code)
All enquiries to office@whangareigolfclub.co.nz or 09 437 0775

PROUDLY SUPPORTED BY



Tamariki Time

The old mill

Have you ever wondered why, at the base of Tikipunga Hill, the road to the right before the base of the hill (when heading towards Tikipunga) is referred to as Millers Lane, while at the other end (slightly up Tikipunga Hill) it is known as Brewery Bridge Road? These two ends of what appears to be the same road face each other from opposing banks of the stream. Why?



Colour me in!

In the late 1840s, Henry Holman relocated to Whangārei and established a flax mill at this location. Despite initial scepticism from the community about its chances of success, the mill proved to work!

Florence Keene, in her book 'With Flags Flying' (available at the Whangārei Library for those interested in New Zealand's history during that period), describes the mill's wheel as being 12 feet in diameter, and constructed from native timbers. It operated through a series of smaller wheels and a cog-wheel measuring six feet in diameter, with the cogs crafted from Maire tree wood, a highly durable New Zealand timber. By using the waterwheel, Henry was able to harness the water's power, which was then used to drive mechanisms for the flax processing.

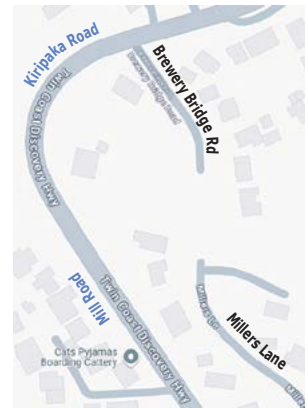
In 1869, Francis Wood founded a flour mill at the same site, which was later also used by a brewery. All three of these businesses used the clean water from the stream. So now you know why the two roads are called Millers Lane at one end, and Brewery Bridge Road at the other!

What occurs in a flax mill?

During the 1800s, flax mills primarily focused on extracting and processing flax fibre to manufacture ropes and twine. The

process involved several stages:

- **Harvesting:** Flax leaves were manually cut from flax plants, often situated in swampy areas, and tied into bundles.
- **Stripping:** The bundles were fed into a stripping machine within the flax mill, which employed rotating drums or other mechanisms to extract the fibre. Workers collected the slimy fibres in the "glory hole".
- **Washing and Drying:** The extracted fibre underwent washing in running water and was then hung out to dry and bleach for approximately ten days.
- **Scutching:** The dried fibre was further refined through a scutching machine, removing impurities.
- **Baling:** The final step involved pressing the cleaned fibre into bales for transportation.



Where are our local defibrillators?

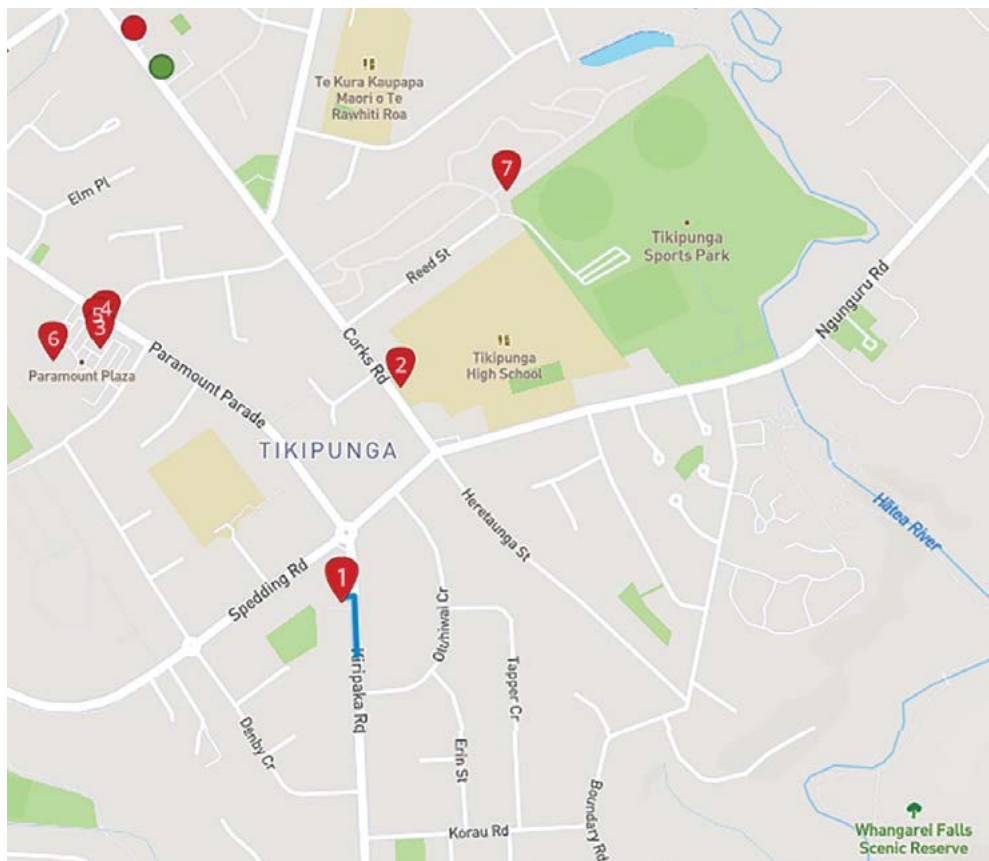
There are a number of defibrillators available in Tikipunga if you ever need one. All you need to do is enter your location on the website <https://aedlocations.co.nz/> and it will show you a map of the nearest AED (Automated External Defibrillators) locations available to the public at the time of day when you need it. Please put this website address into your phone 'Contacts' list so you can find it easily when you need it.

Gareth Jenkin started the website 'AED Locations' after teaching thousands of people how to use CPR (Cardiopulmonary Resuscitation) and AEDs (Automated External Defibrillators). During training sessions, he was often asked about where AED devices were stored locally. He knew that there were a lot of publicly available AEDs, but realised

that they were worthless if people didn't know where they were. People were dying within 50 metres of an AED because no one knew it was there.

Publishing AED locations online makes it easier to find them in an emergency. An AED can increase someone's chance of survival by up to 80% if applied immediately. Over 12,000 locations are now mapped on this website and the Android and iPhone apps.

However, the website can't guarantee that all AEDs will be accessible, in full working order, or still in the same location. The website AED Locations relies on the community to keep information up to date, so if you notice out-of-date information, please contact them, or add any new locations you know about.



Job Explore 2025

On 18 March, Te Ora Hou Centre became a hive of employment, education and training opportunities as students and work seekers dropped in for the Job Explore careers expo.

The expo was organised by the Ministry of Social Development (MSD) and was designed to link employers and training providers with job seekers and those leaving education.

With over 50 interactive stalls including Northland Waste, NZ Defence Force, Jobs for Mums and Hato Hone St. John, the event attracted over 800 attendees throughout the day.

MSD Regional Commissioner Graham MacPherson says the event was a one-stop careers shop where people had the opportunity to meet with support networks, training providers and employers from across industry sectors.

A series of eight mini-workshops hosted by various stallholders was run throughout the day to showcase different job seeking resources, including a 20-minute session on money management presented by Westpac, and another with Creative Northland on creative problem-solving while job-hunting. Other industry sectors represented included health care, construction, and infrastructure. Education and training providers (including NorthTec, University of Auckland and Work Ready NZ) were on hand to discuss apprenticeships, courses, and other pathways to employment – including CV creation, interview skills and driver licensing advice.

Summarised from press release, MSD

◀ Continued from page 3 - Whānau at the Falls



Pehiāweri Marae hangi team - sold out again this year



People Potential - building futures



A netball fundraiser



Not sure?
Ask us.

We provide free, confidential and independent information and advice to help you understand your rights and responsibilities.

69 Bank Street, Whangarei
09 438 8046 • whangarei@cab.org.nz
www.cab.org.nz

Akongia tētahi mea hou
Learn something new



CEW
COMMUNITY EDUCATION WHANGAREI

www.cew.ac.nz
P: 027 428 5412
09 435 0889

◀ Continued from page 3 - Whānau at the Falls



Bill Downs' Whirlitzer



The Baptist Church youth group stall



Electoral Commission - making balloon creatures and signing up future voters

Pop-up cycling track

Tikipunga has a new pop-up pump track, thanks to funding from the Waka Kotahi Transport Choices programme.

The pump track is free for everyone to enjoy. It is a modular track, made up of different sections that can be packed up and moved from one place to another. Think of it like a moveable piece of playground equipment.

The model in Tikipunga (until mid year) is the World Cup pump track by Park Life. It is 65 metres long and can be configured in three different ways. The track is currently located in Korau Road Reserve in Tikipunga. The track includes a circuit of hills and bumps, rollers and banked turns. It's designed to be ridden by scooters, skateboards and bike riders pumping to get momentum, instead of pedalling or pushing.



20 Otuihau News - Winter 2025



No motorised vehicles or electric scooters are allowed on the track.

Visitors to the pump track can access Korau Road Reserve from Korau Road or Hinau Street. It's also just a few minutes by bike, skate or scoot from the Kamo Shared Path.

MAYOR'S MESSAGE



Upcoming Local elections

As your Mayor, I am excited to announce that our local elections are just around the corner. This is such an important time for our community, as we all have the opportunity to shape the future of Whangārei by electing representatives who will make important decisions on our behalf.

It's also important to understand that Whangārei is using a new voting system, 'Single Transferrable Vote' (also known as STV), and to be aware of the key dates and phases of the elections process.

Single Transferable Voting (STV)

This year, Whangārei District is using the Single Transferable Voting (STV) system. STV allows voters to rank candidates in order of preference. This system is designed to allow as many votes as possible to be used with the election of candidates.

How does STV work? When you get your voting papers, you will see a list of candidates. Instead of voting by ticking a box for the candidate you want, you will need to rank them in order of preference (1, 2, 3, etc.). It's important for you to know that you can rank as many or as few candidates as you like, just make sure you number in sequence (don't leave any gaps).

When the votes are counted, if a candidate reaches the quota (which is based on the number of votes and seats available), they are elected. If not, the candidate with the fewest votes is eliminated, and their votes are transferred to the voters' next preferences. This process continues until all seats are filled.

The STV system is designed so that your vote can still make a difference even if your top choice doesn't win, as your vote can be transferred to your next preferred candidate.

Before you can vote in the local elections, you need to ensure that you are enrolled to vote. Please take a moment to check your enrolment status by visiting www.vote.nz.

Remember - every vote counts!



LOCAL ELECTIONS 2025

HERE'S WHAT YOU NEED TO KNOW

Here are the key dates when dealing with the upcoming local body elections.

Stand for Council:

The nominations period runs from 4 July - 1 August

Voting papers sent out:

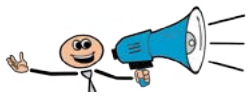
From 9 September - 22 September. If you haven't received your voting papers by the 22 September, you'll need to come in to Council and conduct a special vote

Voting Period:

9 September - midday 11 October

Results Announced:

17-18 October, 2025



Whangārei News and Updates

Successful Hospice Fabric-a-brac

Wow. An amazing result for a first-time Fabric-a-brac in Whangārei, raising a total of \$7774.80! The Mop Up Pop Up at the Hospice Shop was a roaring success, raising \$1046 in itself! Kia ora Northland, you rock! Thank you so much to all our volunteers, stallholders and lovely customers and our sponsors: Whey 2 Go, Native Florist, Karajoz Coffee Company, Fonterra, Te Ora Hou Northland and @ecosse_systems. And thank you to Linda Hand who donated the proceeds from her stall. It was such a fun day and we couldn't have done it without you. Make sure you join the mailing list if you want to make sure you keep in touch with future events in the region via <https://fabricabrac.com/>, and we'd love to hear from you if you can help with organising next year's event.

Contributed by Northhaven Hospice



Northport governance changes

The Northland Regional Council has been given the green light to proceed with a takeover of Marsden Maritime Holdings. Northport will now be under a single ownership umbrella via a new joint-venture company combining MMH and Northport. Under the proposal, NRC would hold a 43% stake in the new company, holding the assets of both MMH and Northport. Port of Tauranga would hold a 50% stake and Tupu Tonu (Ngāpuhi Investment Fund Ltd) would hold

a 7% stake. NRC and POT would have equal decision/voting rights.

The additional \$40.78 million required from council - on top of its current shareholding in MMH - will be paid for by borrowing from the New Zealand Local Government Funding Agency as well as selling some of the council's non-strategic property assets.

Pōhutukawa Coast FREE PLANTS

Whangārei District Council's Pōhutukawa Coast Programme is once again this year providing free native plants to ratepayers and residents - these will be available from 20 June - see the Whangārei District Council website for more details.

The programme is this year celebrating the 100,000 plants already given away to residents and ratepayers over the years! To mark the milestone, council held a community planting event, at Tauroa Street opposite Bunnings, greening our city with even more native plants. Thank you to all those who helped out on the day.

Five arrests made in Tikipunga

Five people, aged 15 and 16, were arrested in Tikipunga following an aggravated robbery and attempted burglary at service stations on Tarewa Road and Kiripaka Road.

Detective Sergeant Ryan Cooper, Whangārei CIB, says cash, cigarettes and vapes were targeted. A search at an address on Pebble Beach Road led to the arrest of two people who were taken into custody without incident. "Some of the stolen property has been recovered from the address." CCTV assisted Police in arresting another three people. "A search of the vehicle has also located some of the stolen goods and cash."

"This was a quick response by our teams, ensuring our community knows we are dedicated to holding offenders to account for these crimes. I hope the Tikipunga and wider Whangārei community feels reassured by these arrests."

Summarised from NZ Police press release



Please contact the editor margie.kent9@gmail.com for FREE notices or to update existing notices in the Regular Community Events and Services

Baby and toddler needs - Te Ora Hou at 104 Corks Road provides holistic support for your whānau, from antenatal care through to parenting courses. Call (09) 438 5556

Basketball Courts are available at Te Ora Hou 104 Corks Road, Tikipunga, at no charge, use at your leisure, 24/7

Church services are held at:

- **Hope Church** every Sunday at 9.30am, located on the corner of Kiripaka Road and Otuihau Crescent
- **Pehiāweri Marae historic church**, 99 Ngunguru Road on the 3rd Sunday of every Month from 9.30am
- **Tikipunga Adventist Fellowship** every Saturday at the Hope Church, (corner of Kiripaka Road and Otuihau Crescent) at 11 am
- **Tikipunga Baptist Church**, cnr Kiripaka Rd and Heretaunga St, Tikipunga on Sundays 10.00am - Worship, Fellowship, Teaching, Morning Tea

Community Connectors are available at Te Ora Hou - they can connect you to the support you need. Contact Leewyn on 021 287 7078 or Michelle on 021 389 661

Community Education Whangārei (CEW) at Kamo High School - Website: <https://www.cew.ac.nz/> Email: cew@kamohigh.school.nz; Phone: (09) 435 0889; Class venue: Unless otherwise stated all classes are held at Kamo High School

Creating with Love Art Workshops - adult colouring-in workshops, held on Thursdays 11-12 noon. Please RSVP with Multicultural Whangārei (09) 430 0571 or email info@mwhg.org.nz

Junior Golf Coaching - Denby Golf Club offers FREE coaching for juniors on Sundays. 8:30-10am for players, and 10:30-12 noon for beginners

Love Whangārei Monthly Clean Up - Check LWMCU Facebook page for upcoming events. <https://www.facebook.com/LWMCU>

Maara Kai Roopu welcomes all to join them at the mara (garden) behind the marae buildings at Pehiāweri Marae every Monday (weather permitting) during term time; from 9.00am

Men-Tall mental health support - Monthly support group for men dealing with everyday struggles - every third Monday of the month, from 6:30pm, at Brothers Barbers in Te Kamo. Contact Josh MacFarlane, 021 0255 1594 or josh.macfarlane@mentall.org.nz

Miniature Train Running Days - The track is open to the public every 3rd Sunday, School Holiday Wednesdays, and all Museum Live Days. Join us for school holiday fun train rides at the Miniature Railway at Heritage Park, Maunu, Whangārei. Only \$2 per ride

Multicultural Whangārei's shared lunch - on the last Tuesday of every month at noon, open to all. Bring a plate of food to share and have a chat. 12:15 - 1.15pm. Please RSVP by calling (09) 430 0571 or emailing info@mwhg.org.nz

REGULAR COMMUNITY EVENTS & SERVICES

New Zealand Society of Genealogists Inc - Whangārei Branch. Meets 1st Saturday, February to December, 9am - 12 noon in the May Bain Room, Whangārei Central Library. Contact Kathy 021 263 7358 or Whangārei@genealogy.org

Repair Cafe Whangārei - Volunteers repair most things for a koha. Every third Saturday of the month, 1.30 - 4pm, Reyburn House at the Town Basin. For more information, refer to the Facebook page or email karen@force.org.nz

Te Roopu Hauā/ Disability club - meets up on the second Friday of the month at 6 pm. Board games, card games, and a laugh at the Hope Church Hall in Tikipunga, on the corner of Kiripaka Road and Otuihau Crescent. All welcome. Contact Adam White at adamnoelwhite@gmail.com

Tiki Pride (Tikipunga Community Trust) meetings 2025 - 9 June, 11 August (AGM), 13 October and 8 December, starting 4.30pm at Te Ora Hou, 104 Cork Road. (unless advised otherwise on Facebook). Please feel free to join us.

Tikipunga Sunday Market - 8am to 11am at Tikipunga High School every Sunday morning. Garage sale bargains, local arts and crafts, plants, seasonal produce, seafood, kai and hot coffee! For stall bookings and enquiries contact Lynne via Facebook <https://www.facebook.com/TikipungaMarket>

Waiaata Joy is at 6.00-7.00pm at Pehiāweri Marae, 99 Ngunguru Road. Held every Tuesday during school term

Waiaata Māori - on Wednesdays at 1- 2:30pm, open to all. Please RSVP with Multicultural Whangārei by calling (09) 430 0571 or emailing info@mwhg.org.nz

Whangārei Budgeting Service - FREE Financial Mentoring: Our financial mentors have the skills to negotiate debt repayments and discuss debt solutions with creditors

Whangārei Choral Society - Do you love to sing for pleasure? We meet Mondays, 7-9pm, at St John's Golden Church, 147 Kamo, to rehearse for three annual concerts. No auditions. Our friendly welcome mat is out to men and women, all ages. More Info - Meg - 027 337 9072 or email Whangārei.choral@gmail.com

Whangārei parkrun - a fun event where you can "run, walk or roll" every Saturday. It's a 5km course starting and finishing under Te Mate A Pohe Bridge in Port Rd. It's free to enter by going to <https://www.parkrun.co.nz/register>. We are there by 8am, come and join us. Open to all no matter what speed or age you are

155 Whare Āwhina Snack Packs - Every Monday during term, one per child, all you need to add is the sandwich. Request through Facebook messenger OR come to 155 Open Arms (Corner Robert and Walton Sts) OR 155 Kamo Rd on Monday mornings between 8.30am and 9am

155 Whare Āwhina Food Bank - 155 Open Arms, 102 Robert Street, Whangārei. Call us on 09 437 0185 Ext 4 or freephone 0800 120 926 to request your parcel. Whānau can receive two parcels per month

Otuhau News is not responsible for any events or services cancelled for any reason



WINTER DIARY

Please contact the editor margie.kent9@gmail.com for FREE notices or to update existing notices in the Community Diary

Now till 24 June - Puanga Matariki festival

A special series of cultural events for people to come together and celebrate the Māori New Year, Te Tau Hou Māori. See more on page 16. Check out the Council's website for all the events - www.wdc.govt.nz/Events/Festivals/Puanga-Matariki-Festival

Monday 2 June - King's Birthday - public holiday

Friday 20 June - Matariki - public holiday

Friday 20 June

FREE native plants available from Whangārei District Council from today - check council's website for locations and details. Two plants per property available - whether you're a renter or owner

Friday 4 July

Whangārei Junior Open Golf Competition Registrations close 21 June. Play starts at 9am at Whangārei Golf Club. Enquiries to office@Whangareigolfclub.co.nz or phone (09) 437 0775

Friday 4 July until 11 October - Elections Hub

An elections hub will be open to all in Te Iwitahi, council's office building on Rust Avenue. Staff will be available to answer all your local government elections or Māori ward poll questions.

Saturday 5 July

Māori All Blacks to play Scotland in Whangārei Semenoff Stadium - Black Ferns v Black Ferns XV trial match kicking off at 1:05pm and the Māori All Blacks v Scotland match at 3:35pm

Saturday, 12 July - Sandbox Fandom Festival 2025

A celebration of all things geek - art, games, cosplay, animation, comics, music, tech and more! 10 - 4pm at Forum North, 7 Rust Avenue, Whangārei. General Admission \$12, Family Pass \$40, booking fees apply - contact info@sandboxfanfest.co.nz and Sandbox Fandom Festival website

Friday 8 August - Getting Out There Expo

An Expo to shape a more inclusive and accessible Northland. Forum North will come alive with businesses, organisations and community leaders coming together to connect with disabled people, their families, carers, service providers and advocates. 9 - 4pm, Te Kotahitanga Expo Hall at Forum North, 7 Rust Avenue. Free event

Tuesday 12 August - Hui

Whangārei District Council hosts its last Welcoming Plan - Community Engagement Session to discuss maximising economic development, business and employment. Register on www.eventfinda.co.nz. Central Library, 3:30-5:30pm

Saturday 7 September - Multicultural Day, Whangārei Library, 10am to 2pm

Monday 15 September - Meet The Candidates public meeting. Meet your potential elected members at a public meeting. Gather from 6pm (with a 6.30 start) at the Kamo Bowling Club, Three Mile Bush Road, Te Kamo

Monday 22 September - Local government elections. If you have not received your voting papers by this day, please arrange for a special vote by contacting the Electoral Officer for Whangārei District Council, Dale Ofsoske: Phone: 09 973 9212 or 0800 922 822, Email: dale@electionservices.co.nz

Wednesday 1 October until 15 October - The Silver Festival

A celebration for those in the older generations. An information booklet will be available from Whangārei District Council closer to the time, and check out their website anytime for listed events <https://www.wdc.govt.nz/Events/Festivals/Silver-Festival>

Saturday 11 October - Local government elections close at noon

◀ *Continued from page 3 - Whānau at the Falls*



Facepainting at Whānau at the Falls



Mana o te Hula performers raising funds for their trip to Rarotonga



Recycling provided by Eco Solutions

Otuihau News is not responsible for any events or services cancelled for any reason. Please check with local event organisers