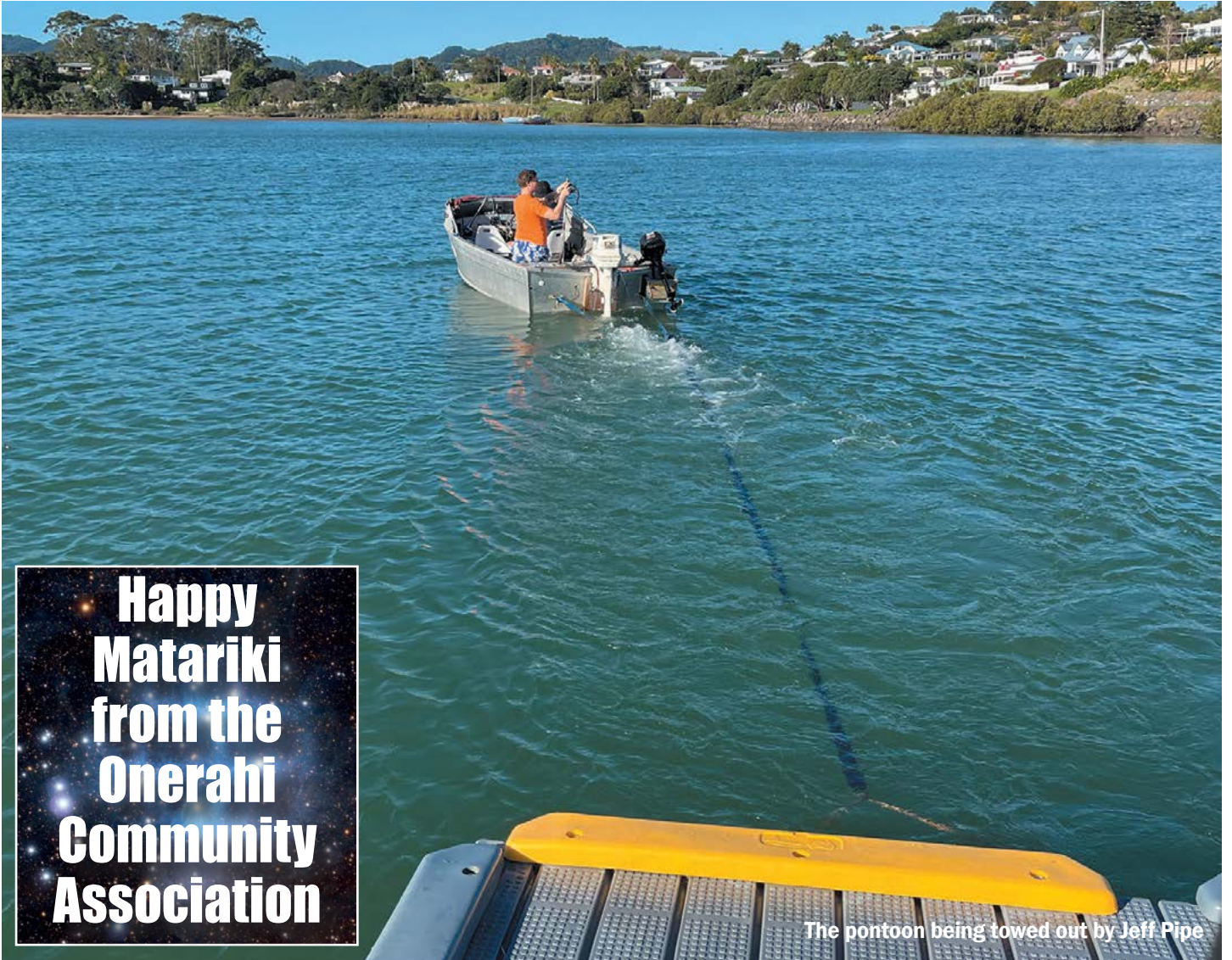


June July 2022

Onerahi Orbit

Free to you from the Onerahi Community Association

Covering Onerahi, Parua Bay, Pataua and Whangārei Heads



**Happy
Matariki
from the
Onerahi
Community
Association**

The pontoon being towed out by Jeff Pipe

GAS Parua Bay break in - Pg 4 • Hercules touch-n-go - Pg 6 • Onerahi win Stafford Choat Cup - Pg 15

RayWhite

027 536 0369

joanne.stevens@raywhite.com

Licensed Real Estate Salesperson (REAA2008)

let's go with Jo

Joanne Stevens

Haere mai,

Mānawatia a Matariki. This means to honour, acknowledge, and welcome in Matariki. Have a lovely holiday everyone - enjoy your families and honour those who have passed.

Please remember that your voice is always welcome in the Onerahi Orbit. Letters to the Editor will be published - either in full or abridged (as space allows). Our diversity, and acceptance of it, is our strength and we welcome lively debate. Please remember that your **written and photographic contributions** are always welcome in the Onerahi Orbit.

Nga mihi from the Orbit team.

LETTERS TO THE EDITOR

Opinions expressed in articles, advertisements or letters appearing in Onerahi Orbit are those of the author and advertiser and do not reflect those of this magazine nor the Onerahi Community Association.

NEST helicopter noise

Dear Editor,

I am disappointed and a little angry that 350 people oppose our rescue helicopter being based at Onerahi airport. Airports are made for aeroplanes and they are noisy. If you choose to live near an airport you must expect some noise to be heard at any time of the day. When I was a young married man my wife and I and our baby son were often woken at 3am by the bells of a railway crossing and the noise of a passing train. We lived through it and lived a long and happy life until my wife passed away four years ago. Now 70 years after those interrupted nights I would love to be able to hear those bells and the train; and even a helicopter, even at 3am. There are millions of people who can hear nothing so petitioners count your blessings, donate to NEST (Northland Emergency Services Trust) and remember the next life saved by that helicopter may be yours.

Kindest regards,

Max McMillan, Onerahi.

SOUND Save Onerahi from Undue Noise Disturbance

Dear Editor,

We're reaching out to Onerahi residents to inform them about SOUND (Save Onerahi from Undue Noise Disturbance) Inc - an incorporated society formed to oppose the relocation of the Northland Emergency Services Trust (NEST) to the airport.

Whangārei District Council has agreed in principle to allow NEST to develop a base at the airport. We are deeply concerned about the huge amount of noise which will be generated by 3000-plus helicopter movements per year (with a quarter of them at night), and also by the way our council did this.

We believe WDC has made legal errors in doing this without any consultation with residents and without looking at all options before imposing this major noise disturbance on our community. WDC has also ignored previous restrictions around allowable noise levels.

We have started legal action against WDC and are raising funds for legal expenses. We welcome any residents who want to join us; please contact committee.sound@gmail.com for more information.

Yours sincerely

SOUND Committee

Contents

Onerahi Community Association Report	3
GAS Parua Bay Wrecked	4
Matariki Public Holiday	5
Visiting Australian Super Hercules touch-n-go.....	6
Launch of Onerahi Pontoon.....	7
Our Pre-schoolers	7
Changes for Local Elections	8
Member of Parliament Emily Henderson	9
Dr Shane Reti, National List MP	10
Tech Talk with Vince Cocurullo	10
New Health System Proposed.....	11
Northland Regional Councillor Amy Macdonald.....	12
Onerahi School Report	13
Onerahi Volunteer Fire Brigade Summary	14
Congratulations Onerahi Football Club.....	15
SPCA calls for pet desexing.....	15
New Fire Rescue at Whangārei Airport.....	16
Ranger Jo's Report from Matakoho	17
Bream Head Conservation Trust's birthday	18
Backyard Kiwi April 2022 update.....	19
Outback Adventures with Pete and Libby Urbahn	20
Sail Northland.....	21
Tides	22
Coming dates & events and Venues for hire	24

Electronic version of the Onerahi Orbit also available at:
<https://www.issuu.com/onerahiorbit>

Advert sizes & costs:

		BLACK & WHITE	COLOUR
Full page	270mm high x 190mm wide	\$600	\$900
Half page	270mm high x 90mm wide OR 135mm high x 190mm wide	\$350	\$500
Quarter page	135mm high x 90mm wide OR 64mm high x 190mm wide	\$180	\$250
Eighth page	65mm high x 90mm wide	\$ 85	\$150
Block advert	40mm high x 60mm wide	\$ 40	\$ 75

GST not applicable.
Invoices will be emailed or posted after the publication date.

Published in April, June, August, October, and December.

The Onerahi Orbit is a not-for-profit publication owned by the Onerahi Community Association, that reports the good news in Onerahi, Parua Bay, Pataua, and Whangārei Heads. 4100 copies are printed by Jeff Oliver Print and distributed by volunteers throughout this area; readership is approximately 12,500. No part of this publication may be reproduced without the prior written permission of the editor, writers, and owners of Onerahi Orbit.

Follow us on Facebook
www.facebook.com/onerahiorbit



Editor: Margie Kent
Email: onerahiorbitmagazine@gmail.com
Advertising: Megan Lavin-McIsaac 022 641 9786
Email: advertising@megatype-publishing.co.nz
Design: Megan Lavin-McIsaac 022 641 9786
Email: graphics@megatype-publishing.co.nz
Accounts: Rose Tantau 438 5499
Email: ccoca@xtra.co.nz
Deliveries: Allan Westlake 021 437 591



- Cultivate and nurture the interests of the community of Onerahi
- Promote the district
- Assist Residents
- Develop and administer facilities

Onerahi Community Association report

Hi everyone, this may be my last report as the chairperson of the Onerahi Community Association.

I took the position when the former Chair decided to stand down. Now that I have had the opportunity to be in the position for eight years - 2014 to 2022 - I have decided I will not put my hand back up for the position. As a Councillor on the Whangārei District Council, this position occasionally conflicts with decisions and submissions. Taking a step away from the position enables me to support our community more effectively.

Local body elections are on their way in October, and we have had two major changes. Okara and Denby Wards will merge to be Whangārei Urban Ward with five councillors covering the area. We will also have two seats in a district wide Māori ward, this will be voted on by those on the Māori electoral role.

Anyone can stand in any ward and run for council. All other wards will remain essentially the same with only some boundaries adjusting slightly.

The floating pontoon is in place and I was lucky enough, along with two excited kids, to jump off the new platform. It is fantastic to see the local community come together and support each other to get this new activity zone in place.

OCA and the Onerahi Fire Brigade will be assisting with cleaning and storing as needed. Resource consent was gained, and the E Tu Onyx group has been able to provide a spectacular activation space.

Yours Sincerely
Nicholas Connop



Onerahi Community Association AGM

at 7.30pm on June 21 at the Onerahi Community Hall

- Election of Committee Members
- Onerahi Order of Merit
- Refreshments afterwards
- Admission \$3 which makes you a member of the OCA

If you are interested in standing for a committee position please call
Malcolm 027 438 0052
email ccoca@xtra.co.nz



NEW WORLD
Onerahi

Open from

7.30am to 8.00pm Monday to Friday
8.00am to 8.00pm Saturday to Sunday

Phone 09 436 8008



Simple Kids PRESCHOOL 45 Waverley Street, ONERAHI
09 436 2214



Home from home, with a mini-farm and big outside adventure area.

• Excellence • Quality • Education • Care

GAS Parua Bay wrecked!

During the evening of Sunday 1 May vandals smashed into GAS at Parua Bay - creating expensive damage to the business for just lollies and sunglasses.

Owner Ross Brown immediately posted on Facebook "We have just been robbed for the 6th time, if anyone saw anything or knows anything regarding these break ins could you please let us know. As a business we are unable to sustain this repeated damage and cost, which could lead to our doors being closed permanently."

Since then, the plight of the business has gained national coverage, but more importantly Ross and Lynne have also received a tsunami of local community support. Locals out late at night now check on the property and report activity if they see anything suspicious. Other community members offered to set up a GoFundMe page to help pay for the damage (declined with thanks by Ross and Lynne), while yet others have shown their empathy with home baking and other treats delivered in person to the staff. Ross and the staff have been blown away by the extent of the kindness and support shown.

Police have apprehended one of the culprits - just 13 years old. "They do it for the thrill" said Ross "there are no consequences. Parents need to look after their kids, why are they out and their parents don't know? That's where it starts - with the parenting" Ross has for years supported the local rugby club, and now supports the Junior Golf programme at The Pines Golf Club, to give youngsters the chance to blow off steam in a healthy way.

"I too was young and left school early. There are other ways to get the thrill that are not destructive. I had my fun but I also worked hard and built this up. They could have it too. They are



Photos - from GAS Parua Bay Facebook page: Ross, his daughter and staff.

just looking in the wrong place." And people need to be aware, Ross pointed out, and mustn't buy cheap stuff unless there is proof it was not stolen. "We are all responsible," he said "if no one buys it then the stealing will stop".

Most of the break-ins cost the business more than \$1,000, the most expensive ram raid cost the business more than \$25,000. Ultimately, this cost is borne not only by the Brown family, but also the community at large.

Let's keep our youth engaged in, and challenged by, constructive thrills. Please let the Editor know at OnerahiOrbitMagazine@gmail.com if you know of any free local opportunities for thrill seeking youth, and how they can access them. We will run articles in the magazine to make sure everyone knows about it.

4 FOUR SQUARE
PARUA BAY
09 436 2740
1379 Whangārei Heads Road, Parua Bay 0174
WELCOME TO OUR
FOUR SQUARE

We're proud to be part of the long-standing iconic Kiwi brand that has been the local for New Zealand communities since 1924.

So whether you're keeping it local, or on tour, we're here to make it easy for you. Become a local, and shop where all Kiwis love to shop.

Always welcome. Always local. Always Four Square.

Hours:
Mon-Fri: 7:00am – 7:00pm
Saturday: 7:00am – 7:00pm
Sunday: 8:00am – 7:00pm



TV AERIAL SERVICES
www.tvas.co.nz
NORTHLAND AERIAL SPECIALIST
Two Years Guarantee • 25 Years Servicing Whangārei
SALES • SERVICE • INSTALLATION
Christian & Ethnic Satellite TV
Sound System • Domestic & Commercial
• Radio/FM
FOR EXPERT ADVICE PHONE:
MACK WILKINSON
Ph: (09) 436 0508
Mob: 021 992 974
PO Box 3062 Onerahi

FULLY LICENCED, BYO WINE only
New Day Cafe
Cafe & Indian Restaurant
 1387 Whangārei Heads Road,
 Parua Bay Shopping Centre, Parua Bay
09 436 0184, newdaynz20@gmail.com
OPEN - Tuesday to Sunday - 8.00am-2.30pm & 4.30pm-9.00pm



Matariki Public Holiday

Matariki hunga nui – Matariki brings us together

The first public holiday to celebrate Matariki will be on Friday 24 June 2022. The Matariki public holiday will always fall on a Friday and will shift slightly each year to align with the maramataka (Māori stellar-lunar calendar). When Matariki disappeared in April/May, it was time to preserve crops for the winter season. When it re-appeared in June/July, Māori ancestors could read the whetū to predict the success of the season ahead; clear bright stars are a good omen and hazy stars predict a cold, harsh winter.

"Having this holiday will help us come together to embrace our evolving national identity and celebrate our distinct culture," said Associate Minister for Arts, Culture and Heritage Kiri Allan. "Matariki is a time of unity, renewal, celebration, and hope. With the challenges we have all faced in recent times, it allows us to come together with whānau and friends to pause, reflect and look optimistically to the future."

The holiday will be a time for:

- Remembrance – Honouring those we have lost since the last rising of Matariki.
- Celebrating the present – Gathering together to give thanks for what we have.
- Looking to the future – Looking forward to the promise of a new year.

If you want to celebrate Matariki as a whānau you could visit the graves of loved ones, come together for a kai and karakia, or walk up your local maunga to view the stars.

Whangārei will be celebrating Matariki throughout the Matariki festival. Please check their Facebook page for events. Programmes are available from various outlets such as the libraries and Forum North.

In Whangārei, organised community celebrations will include

- **June and July - Matariki Festival, Pipiri - Hongongoi.** See the Matariki Festival Whangārei Facebook page to keep up with events offered.
- **10-11 June - Pehiaweri Marae - Ko māwharu te marama.** Hosted by Pāpā Rereata Makiha & Rueben Taipari with

onerahi physio.
Elsbeth Sugrue
Taylor Wilkes - Nicole Dempster
Garby Smith - Ricky Brijs-Blaak (Locum)
 Onerahi Shopping Centre
 Call us on 4360919 for an appointment
 No GP referral required www.onerahiphysio.co.nz



many awesome kaikōrero such as Tohe Ashby, Te Warihi Hetaraka, Harko Brown and more! All welcome. No cost, no registrations, 5pm start time at venues. Refer to <https://www.facebook.com/ngatoki.ongapuhi/>

- **11 June - 23 July - Planitarium North - Matariki Night Sky.** Please see <https://events.humanitix.com/matariki-winter-sky> for times and tickets

- **6pm - 9pm Wednesday 20th July, Thursday 21st July, Friday 22nd July - the Whangārei Night Lights Festival** will be held in the second week of the July 2022 school holidays. All ages welcome. Walk-through and experience more than 2,500 square metres of natural spaces, waterways and buildings lit with over 1 kilometre of lights and art showcasing local Northland visual artists specialising in digital media, projection, lighting, sound and immersive experiences. Supported by Northland performers including fire spinning, circus, dance and entertainers. This event is made possible by funding from Creative Communities NZ.

The event dates have been specifically chosen to coincide with the school holidays and approaching new moon for maximum night time darkness. Dress for the weather and fires across the event site will keep everyone warm! Tickets available at - www.whangareilights.com.

- **Saturday, 23 July 2022 - 11:00 to 11:40am & 01:00 - 01:55pm - Matariki Glow Show,** at Forum North. Refer to <https://www.glowshow.co.nz> for further details

Sources: thespinoff.co.nz, wdc.govt.nz and beehive.govt.nz

BLINDS & SHUTTERS WHANGAREI
 Locally Owned and Operated
Rollers, Venetians, Verticals, Sunscreen & Shutters
 Free in-home measure & quote
 Free Installation
Phone 09 430 3535
Mob 0211 95 35 35
gail@blindsandshutters.co.nz
www.blindsandshutters.co.nz

Visiting Australian Super Hercules touch-n-go



May 1st saw a large crowd gather around the airport perimeter to watch an Australian Air Force Lockheed Martin C-130J Super Hercules carry out training circuits.

The airport was contacted by the Royal Australian Air Force just before ANZAC weekend and they asked if they could come up and land at 10am, stopping for an hour. They also wanted to know if the airport could marshal the aircraft on the apron and if ground power was available. The initial email had attached an itinerary of their movement plans in New Zealand. It showed they would come here directly from Blenheim (Woodburn RNZAF base).

A Facebook post was quickly posted passing on the news. In the past when C130 (or a C17 on one occasion) came here, many expressed they wished they had known the plane was coming. Those who do get lucky enough to see them always post about their delight in seeing them. In hindsight, the post should have stated that this was not something official like an air display, just a heads up that something different was coming. A 10am arrival was expected, but with it being a training sortie the crew were free to fly whenever was convenient - the arrival was much later than 10am.

The Facebook post received an overwhelming number of views and shares which indicated there would be a large crowd. The airport café (The Apron) were informed so they could make ready for an influx and the Fire Brigade thought it might be a good chance to sell some BBQ sausages to raise funds.

When the Northern Advocate saw the post, they ran the story but got the day wrong. It was corrected quickly but not before a few people arrived on Saturday.

On Sunday the crowd was impressive, causing some traffic congestion to the roads nearby. An estimated number of 1000 people attended. The aircraft left Woodburn, first doing a touch and go at Wellington and another at Rotorua and eventually did some circuits over Whangārei airport. It didn't stop as originally intended, rather changed runways so both ends of the crowd got a good look.

The flight crew would not have been expecting an audience, certainly not such a large one and we wonder what they thought. All the food and drinks available helped while the crowd waited. Some people have commented about the wait for the aircraft, but the vast majority of feedback has been positive. How lucky were we to see this!

RAAF's reason for the visit is unknown, but possibly the shorter runway and elevated airport make it unique and a good experience for a squadron which may have to land on makeshift airstrips during active service.

For the record, the circuits were not failed landing attempts. The airport is more than big enough for a C130 to easily land. The very same aircraft type did a medical evacuation from Whangārei, flying here direct from NSW and returning without even refuelling. It is a bit big for the apron (plane parking area) though and doesn't leave much room for anyone else. Interesting fact: Until the Money Factory closed, C130's came here monthly to transport the newly minted currency away.



BBQ fundraising



Fireman Steve giving out stickers to a family from Awaroa River Road. Photos on this page by Rose Tantau

Gateway to the North

Whangarei Airport

- Helicopters: Operations
- Secure Parking provided by 'Lock and Fly'
- Recreational Flight Training and Flying
- Aircraft Maintenance
- The Apron Café

Airline Services
Linking to the World

www.whangareiairport.co.nz

Launch of the Onerahi Pontoon

The installation over Easter of the Onerahi swimming pontoon was a truly joint effort by the community



The pontoon being towed out by Jeff Pipe - Cover Pic

Crick Connop organised the donation of the pontoon - it was a whole floating boat mooring, disassembled and stacked up in its bits. Members of the fire brigade, led by Mike Cubb and organised by Justin Rankin, got it loaded up and taken to the airport for construction.

Most of the bolts were missing or bent, so Justin approached suppliers like Donovans and Cookes, who either donated what we needed or heavily discounted the prices. Donovan's even had someone drop off some of the gear. Justin manufactured the mooring eyes which were fitted once the pontoon had been bolted together.

Busck Concrete donated two 1 ton concrete blocks for the moorings. After some brainstorming, it was decided a digger would be the best mechanism to place the moorings. I won't say the currency type involved but the gentleman whisked around there and then and used his digger to carry both blocks out to the chosen spot.

To be fair some neighbours were a little upset as they had not been told of the plans. But the nature of seizing offers of generosity sometimes gets away on us.



Building the pontoon - All fire volunteers, From left - Cameron Jones, James Restall, Jeff Pipe, Justin Rankin and Brian Redwood

Our Pre-schoolers Onerahi Kindergarten report

Onerahi Kindergarten is a child-centered, community focused kindergarten that promotes sustainability, leadership and innovation to support our tamariki to develop their full potential. We work alongside our tamariki, whānau, kaumatua and community resources to offer a rich, engaging and inclusive curriculum reflecting our culturally diverse community.



We are an Enviroschool kindergarten that offers tamariki 2-6 years old a rich, natural environment where they can play in the mud, climb trees, play and work in the garden and be one with nature.

The resource consent was duly processed and a big thanks to the Regional Council for the fee waiver. Consent came through in March. The consent required some signage and reflectors. Big thank you to Dave Lomas for supplying that - much appreciated.

The volunteers nominated Good Friday as the day for the launch. It was a beautiful day and the launch went well. Jeff Pipe provided his boat and so began a very careful trip to the mooring. The process attracted quite a bit of attention. Marcia Aperahama I believe got 1st bombing rights, followed by Nick Connop.

The next morning a blessing was carried out by Fred Titto. The volunteers put their time into it, a lot of favours were called, products and services donated, and support was given by a wide number of people. Thank you to everyone involved. Thanks goes especially to Justin Rankin - a marine engineer who led the whole project and also supplied a lot of the tools and hardware. It couldn't have gone better.



The blessing, carried out by Fred Tito

Changes for the Local Elections 2022

Who can vote?

You are entitled to vote in local authority elections when you are –

- Enrolled to vote for national elections at an address in the district or city where you live, and
- Enrolled as a ratepayer in a different district or city from where you live.

Information about how to enrol for national elections as a parliamentary elector may be found on the Electoral Commission's website – www.elections.govt.nz.

Changes in Whangārei for these elections

The way councillors and the Mayor are elected in the Whangārei District will be slightly different this year, following representation changes announced by the Local Government Commission (LGC).

While the Local Government Commission confirmed their decision to make changes to our District's representation, they did not support Council's final proposal of two district-wide wards, one general and one Māori.

The Commission determined that our district will have six wards in total, with 13 councillors comprised of 11 general ward councillors and two Māori ward councillors elected by ward, plus the Mayor elected at large.

Our new representation arrangements will be:

Five general wards

- Bream Bay General Ward (2 councillors)
- Hikurangi - Coastal General Ward (2 councillors)

- Mangakahia - Maungatapere General Ward (1 councillor)
- Whangārei Heads General Ward (1 councillor)
- Whangārei Urban General Ward (5 councillors)

One Māori ward

- Whangārei District Māori Ward (2 councillors)

These changes will be in effect for the 2022 Local Elections, and voting will occur in October.

Sources: Whangārei District Council and the Department of Internal Affairs

2022 General Ward Map



Onerahi Pharmacy

116 Onerahi Road
Phone: 09 436 0567
www.onerahipharmacy.nz

care + advice Your local health professional

EYES

Melanie Waldron

experience service results

"Her hard work and exceptional communication were highlights during this inherently stressful time."

"Selling our home has been a big decision for us, you have been patient, reassuring, and compassionate."

"When it comes to choosing a real estate agent, you want somebody you can trust, make the process easy and ultimately have a hunger to get you the best price possible"

If you need a Real Estate agent with experience that gets results, give Melanie a call for an obligation free chat today!

021764097
melanie.waldron@eves.co.nz

From your

Member of Parliament Emily Henderson MP for Whangārei A boost for our economy, and a boost for Kiwi households

Summer may have hung on for a while this year but lately winter has definitely been catching up. With the increased heating bills, winter can be a time of real stress, and that includes Northland where for decades we've had lower average incomes and poorer health statistics than most of the country. However, this year around a million New Zealanders will be warmer with less worry, thanks to the Winter Energy Payment resuming at the start of this month. Our Government introduced this payment to help seniors and families with the cost of heating during the colder months, and I've had people from across Whangārei tell me what a difference that makes.

The Winter Energy Payment sits alongside our Warmer Kiwi Homes insulation programme, subsidising insulation and the cost of heat pumps, as well as the Healthy Homes Standards requiring the insulation of rental properties, all part of our work to ensure every Kiwi home is warm and dry, and to ultimately keep people well.

Too many New Zealanders are hospitalised because of cold, damp homes. We know there's no easy answers and no silver bullet to fix the cost of living, but our Government is committed to boosting incomes and reducing pressures facing Kiwi families, and the Winter Energy Payment is just one of the ways we're doing that.

Last month we delivered a package of measures increasing working for families, main benefits, minimum wages and superannuation that will mean the majority of New Zealand families will get more money in their pockets each month.

We're also taking action against the supermarket system to ensure fairer prices, and we've cut fuel excise by 25c a litre and introduced half price public transport for three months, following the war in Ukraine causing increases at the pump.

There's more to do – a lot more – but these changes will make a real difference for the families doing it tough right now, and helping them helps the whole local economy and the many small businesses of Whangārei to stay afloat, rather than watch their customers disappear.

Meanwhile, we're investing in our longer-term future, too. After years of neglect, Whangārei managed to secure \$570 million in last year's budget to set aside for a new hospital and the Ministry of Health is working hard to finalise the plans with the DHB. A new hospital will be a huge boost to Northland's health and also the biggest investment in a Whangārei construction project for many decades, providing years of work that will help secure our economic recovery.



Northland District Health Board CEO Dr Nick Chamberlain shows Health Minister Andrew Little where the DHB plans to build a new hospital.

These are difficult times but the latest figures show the dual focus on both supporting people at the grassroots and investing in major infrastructure is working. New Zealand's economy is recovering faster than almost anywhere in the world, with two top credit rating reviews recently. Unemployment is at a record low, GDP is growing, exports are up, and Government debt levels are much lower than countries like the US, UK or Australia.

I want to make sure Whangārei people get every possible support to make it through. If you want to know about any of these programmes or the recently announced government budget drop me a line on Emily.HendersonMP@parliament.govt.nz or call the office on 09 4307922. I'm here to help.



Budget 22 will invest to build a high wage, low carbon economy that gives economic security in good times and in bad. We will invest in resetting our health system to end the post-code lottery and long term inequities.

We've secured extra funding for the WHANGĀREI HOSPITAL REBUILD

To get all the details, scan the QR code or contact our office to sign up to our email newsletter.

Emily Henderson MP for Whangārei
(09) 430 7922 | Emily.HendersonMP@parliament.govt.nz
f /EmilyHendersonMP

Authorised by Dr Emily Henderson MP, Parliament Buildings, Wellington

Rural health and the impending health reforms



Health in the regions and rural areas remains a concern as the government progresses the health reform bill, Pae Ora (Healthy Futures) Bill, through Parliament. Recent announcements from the Rural GP Network stated "The New Zealand Rural General Practice Network (the Network) is appalled that rural communities have been "left in the wilderness" by the Pae Ora (Healthy Futures) Bill, which was recommended by the Select Committee to Parliament for a second reading.

In its oral submission to the Pae Ora (Healthy Futures) Bill Select Committee in January, the Network made a call for rural communities to be identified as a priority population group alongside Māori, Pacific People and the Disabled, who are already recognised.

The Network argued that if the Bill doesn't highlight a focus on rural communities, and hold Government Agencies accountable for rural health outcomes, then the health inequities faced by rural New Zealanders will not improve.

There is good reason to be concerned with hidden agendas for rural health with the Minister receiving briefings in last year's budget that talked about cutting costs by reducing specialist services at provincial hospitals. This would not be good for rural Northland where we must support and enhance our hard working rural health workforce.

DR SHANE RETI MP
National Party list MP based in Whangārei

Working together

P | 09 438 9992
A | 105 Cameron Street, Whangārei
E | shane.reti@parliament.govt.nz

Funded by Parliamentary Service & authorised by Dr Shane Reti MP-105 Lower Cameron St, Whangārei

Tech Talk Beware of online scammers!

How many times have you been rung up by someone, telling you that you have problems with your computer? The big thing is, neither Microsoft nor Spark will ring to tell you of such! More than that, if anyone asks for your credit card over the phone, **DO NOT give it to them.**

There are a lot of scams going around now, and most of them are from people ringing you up asking to access your computer, and there is a growing number coming through text messages trying to convince you to click on a link.

In November 2019, it was reported in the Herald that \$23million had been scammed from people in NZ that year. Since COVID that number has increased significantly. Read up more on <https://www.consumer.org.nz/articles/scams>.

I encourage the following basic steps if you get caught.

- Contact your bank ASAP, if any money has been taken, there is a very small window to reverse any transactions.
- Change your bank passwords (typically done at the bank).
- Disconnect your computer from the internet, and do not connect until you have had someone check it over. This is done just in case they have loaded any software on it.
- If your driver's license has been photographed, get it renewed with a new number. Taking people's identities is big money around the world.
- Change your email passwords. If someone accessed your computer, and you have saved your passwords, they now have access to those, so changing them is a good precaution.

And the most important of them all...**do not stress.** You are not the first or the last to be scammed, you may feel bad now, yet you can save yourself from future heartache.

Vince Cocurullo
Northland's Fix-it man
IT • COMMUNITY PROJECTS • LOCAL ISSUES

Your Local Okara Ward Councillor

- COMPUTER FAILURE
- REMOTE ACCESS
- EMAIL TROUBLE
- NETWORKING

OR JUST SOME FRIENDLY ADVICE

P 09 4388 834
M 021 438 952
E vince@cocurullo.co.nz
W www.cocurullo.co.nz

Facebook, Twitter, LinkedIn, Instagram icons

New Health System proposed – Pae Ora (Healthy Futures) Bill

Aotearoa New Zealand's public health system has been found to be fragmented, inequitable and inconsistent. For some population groups, in particular Māori, Pacific peoples and people with disabilities, it results in poorer health compared to others in New Zealand.

The Pae Ora (Healthy Futures) Bill lays the foundation for the transformation of our health system to support all New Zealanders to live longer and have the best possible quality of life.

The Bill's purpose is to:

- protect, promote, and improve the health of all New Zealanders; and
- achieve equity by reducing health disparities among New Zealand's population groups, in particular for Māori; and
- build towards pae ora (healthy futures) for all New Zealanders.

To achieve this purpose, the Bill provides a new legal framework for the health system. It reforms some of the structures and organisations, and provides for common principles and objectives to guide all entities to work together and ensure they are accountable for improving health outcomes.

The Bill establishes Health New Zealand – a new entity that will replace district health boards and lead the operation of the health system. It will work in partnership with the Māori Health Authority to design and deliver health services. This will make the system simpler, more consistent, able to focus on population health, and meaningful community and consumer participation.

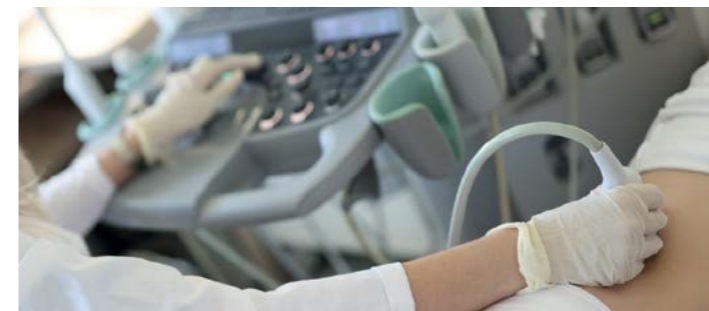
To drive improvement in hauora Māori, the Bill establishes the Māori Health Authority. The Authority is an independent entity with clear accountabilities to both Māori and Ministers. It will work with Health New Zealand to commission and plan services, commission kaupapa Māori services and monitor the performance of the system for Māori. The Authority will also work with the Ministry of Health to prepare national strategies and advise the Minister.

Primary and community care will be organised into localities that cover all of New Zealand.

Each locality will have a locality plan setting out how services will be managed within that locality. When developing these plans, Health New Zealand will talk to local people and communities to make sure the plans are genuinely informed by the needs and priorities of the people in the locality.

The Bill is expected to come into force on 1 July 2022.

Based on 'Factsheet – Pae Ora (Healthy Futures) Bill', by the Department of the Prime Minister and Cabinet



KIWI KIDS
EARLY LEARNING CENTRE

"Providing for the healthy bodies and healthy minds of our kiwi kids"

PH 436 3085
www.kiwikidselc.co.nz

4 Waimahanga Rd, Onerahi

HAMMER HARDWARE

It's your local

Free Local Delivery Open 7 days

Jo-Anne & Kevin Dean

Phone (09) 436 3114
onerahi@hammerhardware.co.nz

Onerahi Hammer Hardware
1 Church Street, Onerahi, Whangārei

BARFOOT THOMPSON & CO

SELLING TOWN OR COUNTRY?

Anna can help you!
Anna's sold hundreds of properties over 20+ years successfully selling Whangārei properties!

Best real estate salesperson!! Anna found us the perfect house. She kept us well-informed throughout the whole process and made sure us as buyers and the sellers, knew what was going on at all times. Thank you and if you want to buy or sell a house, talk to Anna Shervell - Simon & Sophia

Anna sprang into our house sale with such enthusiasm from our first contact. She was just the tonic we needed after a period of personal uncertainty. Communication and honest reporting to us was consistently superb, and we always felt informed. We have been impressed by her personal discretion; and given that we are leaving a much loved home, our house sale has been as stress-free as possible. Anna comes with our highest recommendation - Maurice and Sherryle

CALL ANNA TODAY!
Friendly, Trustworthy, Professional Salesperson

Anna Shervell
M 027 445 1183
E a.shervell@barfoot.co.nz

Northland Regional Councillor Amy Macdonald



amym@nrc.govt.nz www.nrc.govt.nz
To report pollution and environmental incidents call the 24/7 environmental hotline: 0800 504 639

Kia ora Koutou! It is election year for local government, and I'm happy to let you know that I will be running again. I have really enjoyed working in this role for our community and our environment, and I hope to be able to continue. At the end of April we went back to the office after 8 months working remotely, it was great to be face to face again. To save time, money and emissions our council will now work in hybrid, alternating between working from home and coming into the chambers.

As chair of the Joint Climate Adaptation Committee for Northland I've proudly been part of the development and sign-off of the Te Taitokerau Climate Adaptation Strategy. The strategy has been formally adopted by all councils in Northland, which is a really big step forward for getting efficient and effective climate adaptation action underway. It includes 48 priority actions which are the foundation for a regional response to climate change threats to property, infrastructure and our natural environment. You can view the strategy and action plan at catt.org.nz.

NRC has recently appointed Jonathan Gibbard as the new CEO. Jonathan is currently General Manager Environmental Services with NRC and will bring a wealth of knowledge to



the role – particularly environmental management, planning and policy. Jonathan will be an excellent experienced leader through the legislative changes ahead, and will keep focus on delivering environmental outcomes for Northland.

Earlier this month I attended a small meeting to discuss weed management and native habitat restoration in Onerahi. It was excellent to hear from the locals involved and get some clear next steps. While there is much more planning to do, we all agreed that Onerahi has some wonderful areas of native habitat that can be restored and protected. And that weed management in Onerahi is also important for protecting Matakoho Limestone Island, an ecological gem on our doorstep. NRC will continue to support these conversations and development of plans into the future.

Take care out there! As always, I'm happy to hear from you – amym@nrc.govt.nz, or find me on facebook: Amy Macdonald – NRC Councillor.

Ngā mihi nui,
Councillor Amy Macdonald, Northland Regional Council

Disclaimer – this is my personal opinion and not that of the Northland Regional Council.

NEWBERRYS FUNERAL HOME

"SOMETIMES MEMORIES SNEAK OUT OF MY EYES AND ROLL DOWN MY CHEEKS"

ALL-GREATQUOTES.COM

Generations of caring for our Northland families... since 1866. Whangārei's locally owned and operated funeral home. Caring, not corporate.

Ph. 438 2644 (24 Hours)
Newberrys Funeral Home
Corner of Kamo Rd & Moody Ave, Kamo
admin@newberrys.co.nz
www.newberrys.co.nz

April 2022

Te Tai Tokerau Climate Adaptation Strategy

The first Regional Climate Adaption Strategy in New Zealand

Whangārei District Council, Far North District Council, Kaipara District Council, NRC Tai Tokerau Māori and Council (TYMAC) representatives, Whangārei District Council, Far North District Council, Kaipara District Council, Northland Regional Council.

Onerahi School Report

Kia ora e te whānau,
For this issue we would like to highlight some of the fantastic artists we have at our kura. Creating art is a process that not only helps our tamariki develop practical skills while sharing their thoughts and observations, but it also helps them explore themselves as a person. From portraits to pepeha, from paint to digital art, Onerahi School students are exposed to many different opportunities to explore their creative side.



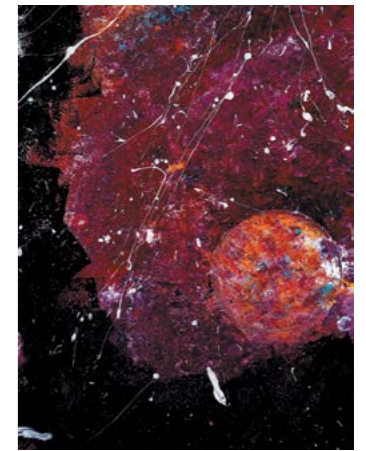
Hazel Owen - Year 5

We hope you enjoy these pieces of art and that they help you connect with a thought or a feeling you would not have had otherwise. Maybe they will inspire you to pick up a brush, pen, or chisel and create something yourself. As Neil Gaiman said, "The world always seems brighter when you've just made something that wasn't there before." Take care.

Ngā manaakitanga,
Danny Hamilton
Deputy Principal



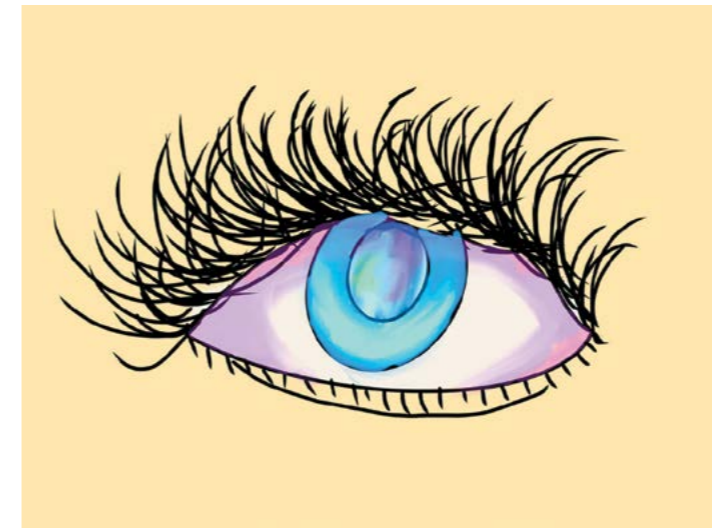
Maia Armstrong - Year 6



Lennix Yukich - Year 6



Markus Rogers - Year 6



Willow Clark - Year 6



Room 7 (Year 1 and 2) read 'I Am Jellyfish' by Ruth Paul and learnt new words like glittering, pulse, piata (shiny) and moana

WHANGĀREI HEADS LANDSCAPE & SUPPLIES

Super-split Firewood
CLEAN GUM
\$140 cubic metre

FREE LOCAL DELIVERY
on min order of 3 cubic metres

09 436 5638
35 Pataua South Rd, Parua Bay
Open 8am – 5pm. 7 days.
email: whlas@extra.co.nz,
A/h: Charlie 027 552 2045.



Onerahi Volunteer Fire Brigade Summary for first quarter 2022



A digger on fire

We missed the last edition of The Orbit so will only summarise the period 1 January to the end of April. Also, as a list of every call will run quite long, I will just summarise by grouping the incident types.

During this period, we have been called out on just over 50 calls.

13 - Vegetation calls have been prominent (as is most summer months), and these include calls for reported smoke, or rubbish fires causing concern. Some of these turn out to be a legal fire that doesn't require any action or in some cases we can't find anything. Being summer we did get some fires that were out of control but this year not as many. It has been a wetter summer than usual.

We have had one airport emergency when an inbound light aircraft had reported smoke in the cockpit. It was a burnt-out electrical wire that was resolved before they landed.

Motor vehicle accidents numbered six. Always a worry when we receive these calls. What will we be confronted with? While there have been some injury accidents; we believe they are not too serious.

Storm damage - We have had more than our usual allocation of wind and rain events. We have had about seven calls directly associated with fallen trees or iron loose on roofs. There are a couple of alarm activations that are probably associated with storms or power failures.

Whenever St John gets a call for a respiratory or cardiac event we get co-responded. This is because such events are time critical and we may have a bit of response time off. We have had five calls of this nature.

Of the remainder we have had some calls to structure fires, fortunately mostly false alarm activations or relatively small events although one larger event, a bedroom fire, was quickly extinguished saving more widespread damage. We do get a few calls to smoke alarms beeping. Do note a beep every minute or so is likely the alarm telling you the battery is flat. It often happens when the battery is coldest at 3am.

Other jobs were, one cat on a roof, a suspected gas leak (hissing heard). We assisted with the search at Whangārei Heads for the missing person.

Mike Chubb
Chief Fire Officer
Onerahi Volunteer Fire



"Please cremate me. Don't put me in the ground where someone may dig me up if you move house."

The team at Stardust will give me a dignified farewell.

Stardust Cremation Services

201 Te Rongo Road, Parua Bay
Phone 09 436 1333; Mobile 0274 960 462
Email stardust@xtra.co.nz



PEPE'S DAIRY

ONERAHI SHOPPING CENTRE

110a Onerahi Road, Whangarei
Service with a Smile!

Mon-Fri:
7am - 8pm

OPEN
7 DAYS

Sat-Sun & Public
Holidays: 8am-8pm

09 436 3600

Congratulations Onerahi Football Club!



Onerahi women's celebrate winning the sought-after Stafford Choat Cup. Image: Onerahi FC.



Onerahi's Mitchell Hanmore wins possession in his side's victory in the Stafford Choat Cup final. Northern Advocate photographer Michael Cunningham

A double win! The Club ticked off victories by their men's and women's teams in the grand finals of regional knockout competitions held over from last season because of COVID-related restrictions.

Onerahi mens beat the reigning champions Kerikeri 3-2 to win the Stafford Choat 2021 men's cup final in the Northern Region Football (NRF) competition at Semenoff Stadium on Saturday 2 April. Goalscorers were Mitchell Hanmore, Jake Boom and Jackson West. In the women's knockout final

played at Semenoff Stadium on Sunday April 3, Onerahi beat Mad Hatters Stonehaven 6-1.

This outstanding double win was followed up soon after by the mens team taking out the Community Cup at Trigg Stadium at the end of April. As posted by the Club on Facebook "It's often difficult to perform in consecutive 'big games' but our lads managed to pull off another win to take out the trophy."

Source: Friends of Football website

SPCA calls for pet desexing



Northland is overpopulated with pets. The answer is in desexing. Your desexed pets will generally live longer, healthier, happier lives.

Veterinary science tells us our female pets do not need to experience a heat or have a litter before being desexed. Entire female animals are at higher risk of developing cancers of the uterus, ovaries and mammary glands, as well as suffering from complications during pregnancy and birthing. Entire male pets have a higher risk of prostate cancer.

Other advantages include no "heat" cycles in females meaning no males hanging around, no false pregnancies, and no uterine infections. For males, it means reduced urine and scent marking, less roaming and fighting and aggressive behaviours, which can lead to contact with infectious diseases and parasites.

A desexed animal may gain weight more easily. Therefore, a desexed animal needs relatively less food to maintain a healthy weight.

There is generally no great character change. If anything, a dog may be quieter and more placid.

Registration fees are lower for desexed dogs. Cost can be a barrier but there are many initiatives that offer lower cost (sometimes free) desexing. Check out <https://www.facebook.com/Helpsomeonefixtheirpet/> or SPCA Desexing Services www.sPCA.nz/desexing

Written by Dinah
SPCA Saving Lives Assistant, Whangārei

- » Business Cards
- » Flyers
- » Posters
- » Vinyl Labels
- » Books
- » Magazines
- » Letterheads
- » Folders
- » Invoice Books
- » Calendars
- » Pads
- » Rack Cards

AND MUCH MORE!

ALL WORK GUARANTEED

0800 141 402 [f/jopprint](https://www.facebook.com/jopprint)
info@jop.co.nz • www.jop.co.nz



New Rescue Fire Service at Whangārei Airport



Residents of Onerahi may have noticed a new Fire Fighting Appliance is now based at the Airport. This is for a new airport dedicated Rescue Fire Service that is required under the Civil Aviation Rules which has been triggered by an extra daily scheduled service by Air NZ.

There used to be a service here in the 1970's ending in 1988 when the crown restructured most of the way things were provided and user charges etc. were introduced. The Fokker 27 (Friendship) Services ended, along with the then Ministry of Transport provided Rescue Fire and the Flight Service in the Control Tower.

In July 2021 Air NZ informed us of the extra daily flight, scheduled to start on 31 August, but delayed due to COVID.

We informed the Civil Aviation Authority and agreed a start date for the RFS on 1 April 2022. This was considered a fair time frame to set up.

Airport Rescue vehicles are not readily available. They are different to the FENZ trucks in that the airport truck carries more water and auto mixes with a foam concentrate as it is sprayed. The main roof turret can be operated from inside

the truck. It is capable of a truly rapid deployment that should have us applying foam onto an aircraft within three minutes of an accident. They are also 4wd so that we can get on the grass with more confidence. Used ones are old end of life vehicles so we quickly opted to go new. However supply is usually built to order, with up to 18 months to get delivery.

In Europe a well-known manufacturer of Airport Fire Appliances (Rosenbauer) advised us that they had a demo unit built for the British market. This was available immediately and they assured me they were not experiencing shipping delays to Australia.

Our airport is a joint venture between the Ministry of Transport and the Whangārei District Council. The agreement had a clause that stated the Ministry would pay the capital for RFS set up. This was fortuitous as the funds required are quite significant.

The appliance was shipped out on the 18th of December and took until about 20 March to arrive in Auckland. Quite a bit longer than we hoped and cut it fine for our 1 April start date. As the threshold for requiring RFS had not yet been crossed due to the ongoing struggle with COVID, the CAA extended our agreed start day by 1 month. We went operational Easter Monday.

We had to restructure our on-airport management staff. To run two-man crews effectively 14 hours a day 365 days a year meant we had to interview and select six fire fighters. These employees will not only be RFS focused, but they will also do all the other on airport tasks required to run an airport.

The airport operations manager Steve Jennings is a Senior Firefighter at the FENZ station in Onerahi and I am the Chief, so we joined the six in airport Rescue Fire Training. One good effect of the Refinery closing down was that we have recruited three excellent members of their fire team. Another is ex British military RFS. Three of the crew are also FENZ volunteers here at Onerahi. Overall an excellent team with substantial and well varied experience.

Training was carried out both here and at Christchurch airport.

In addition to the appliance, we had to procure all the equipment for the truck and fit out all staff with Personal Protection Equipment. Radios for aircraft and FENZ communications were also fitted locally.

It is fair to say it's been quite a journey. COVID has caused supply delays - a major cause of stress. It has also taken out some of our employees just as we start to provide the service.

While we are now operational, we are yet to build a Fire Station. This is now where we are concentrating our efforts. Perhaps we will be well under construction by the year's end. For now, we are making do with temporary facilities.

A support vehicle (a ute) has also been procured and we will take delivery by the end of May. The extra flight finally started properly in April.

By Mike Chubb
Manager; Whangārei District Airport

Ranger Jo's Report

Visitors, volunteers, and other comings and goings

A group of waka carvers from the Hihiaua Cultural Centre, led by Te Warihi Hetaraka, came to visit Matakōhe on 21 March. We spent a lovely afternoon at the Visitors' Shelter, sharing stories of Matakōhe, both past and present. Some attendees had helped with the translocation and rearing of oi/grey-faced petrels from Taranga to Matakōhe in 2010 and again in 2015, so it was nice to give them an update on how this project was tracking, along with the various other species that inhabit the Island.

Volley Day went ahead on 6 April and we managed to dig out and replace the drain that runs from behind the Ranger's cottage down past the Old Manager's House, cut back and clear the all-weather track, clean out the guttering at the Visitors' Shelter, service the generator, deal to some moth plant, and make a few more gecko ACO's to be installed at the Forest gecko site to help with monitoring efforts next summer.



Pest control

In the last month we have caught two stoats and two rats on Knight Island, and one rat on Rabbit Island. We also caught the very first mouse on the main island during my time as Ranger. Alarmingly, our automatic lure/trail camera stationed near the leaky dam has captured footage of a rat (hopefully singular, but that's probably wishful thinking) on three separate occasions, prompting me to install extra traps and fill bait stations around this area. It's a shame about the rats but unfortunately it does happen being so close to the mainland. We are hoping that extending the community trapping/buffer zone towards Kaiwaka point with the support of Tiakina will make a difference.



Flora and Fauna

Bernie came across a surprise visitor while working on burrow 49 at the petrel site - oi number E216596. After checking in with Cathy's database, it turns out this is the first recorded returnee from the 2015 oi translocation! This bird was released into burrow 36 in 2015 and fledged on 5 January 2016. As Cathy said, it's keen to be back only seven years after fledging. A very exciting discovery, here's hoping for a few more this year! I also had a surprise visitor while monitoring the oi burrows, a 1450g, stropy, male kiwi, released by Darren in October 2020.



Other news

I gave my very first talk since becoming a Ranger to a small group of around 10 people from 'Birds Northland' on 14 April. This was an interesting change of scene for me, and I really enjoyed getting to meet and make connections with some of our local birders, including a few people that have had quite a bit to do with Matakōhe in the past, including helping with the very first kiwi and oi translocations.

Cheers!
Jo and Darin



The 40ft yacht washed up on the Northern side of the Island due to cyclone Dovi being rescued

Funeral Trust
www.fdanzfuneraltrust.co.nz
Prearrange your funeral today with your FDANZ Funeral Director

Morris & Morris Funerals
HONOURING LIVES FOR GENERATIONS

For more information about funeral planning and prepayment options, please contact
Morris & Morris Funerals
office@morrisandmorris.co.nz
www.morrisandmorris.co.nz
09 437 5799

Bream Head/Te Whara CONSERVATION TRUST



It's our birthday, come for a walk!



View towards Ocean Beach • Smugglers track • Bream Head track. Photos by Hadden Morrison

It's an exciting time for Bream Head Te Whara Conservation Trust as we reach our 20th year. We'd love to tempt you out here to venture into the Reserve so you can see for yourself some of our achievements. The Reserve has a number of walks that can accommodate most levels of fitness; they take you into a wide variety of environments from coastal harbour to ocean beaches, from flat regenerating pasture to world class coastal broadleaf forest.

A good place to start is the Smugglers Bay loop track, which begins at the Urquhart Bay car park and winds along the harbour entrance and past Smugglers Cove. It's our most popular track probably because it's the easiest. We have a Kiwi Guardian Trail for the children to follow on this track too.

The Peach Cove track starts from the car park on the

right just before you head down to Ocean Beach. The gravel road goes past our upgraded ranger headquarters, where you can check out one of our information boards, before the kauri dieback boot cleaning station. Please clean your boots! Although we do not have big stands of kauri, the trees we do have are very precious. The track then ascends quite quickly; it's a great workout, and very satisfying to be able to look out over the landscape and see the Reserve emerging in front of you. Now you have choices, of descending down the 900 steps into Peach Cove or heading left to Ocean Beach or right to Urquhart Bay.

The Ocean Beach track starts at the Ocean Beach car park and takes you along the back dunes to another kauri dieback cleaning station. Once you're through this you may decide to loop back down to the beach or head skyward up the ridge line. As this part of the Reserve is regenerating farmland the lower parts give remarkable views in every direction, back to the harbour, out to the islands, up north to Kauri Mountain and beyond. A great reward when getting to the top is to see the historic remains of the World War 2 outpost here.

Our super, newly upgraded website has lots of information about the flora and fauna you may encounter but I guarantee that the magic of the Reserve will leave you wanting to come back.



Peach Cove Hut

Rick Anderson
Painter & Decorator 2001 Ltd

434 0940
021 038 3733

rickyanderson555@icloud.com

THE FALLS ESTATE
A BEGROUP LIFESTYLE VILLAGE

Life at The Falls Estate means spending time enjoying the things you love.

The Falls Estate isn't just retirement, but an appetite for living.

437 5844

94 BOUNDARY ROAD, TIKIPUNGA, WHANGĀREI
WWW.FALLSESTATE.CO.NZ



Backyard Kiwi April 2022 update

Kiwi Counting Season ends on June the 8th

Thanks to those new folks that are helping out this year and thanks to the old hands too!! This monitoring work is a crucial check on the effectiveness of our stoat and dog control efforts. So far things have been working well with an increase in kiwi numbers from 80 in 2001 to almost 1100 in 2021 at the Whangārei Heads. These kiwi are now spreading inland through Parua Bay.

The kiwi are fat and happy at the moment after a good wet autumn and are already calling hard – have a listen if you get a chance on a quiet evening. Check out: <https://www.backyardkiwi.org.nz/useful-information/what-do-kiwi-sound-like>

Backyard Kiwi Predator Control Program

The traps lost in the multiple flash floods of the last few months have been replaced now. As expected for this time of year stoat catches are down and weasel catches up.



What your kiwi have been up to

The ground based Kiwi Saver (1080) pulse at Manaia continues to show its worth with more chicks turning up in the area. Unfortunately one was found dead beside a driveway in Ody Road. It was 700g and too decomposed to DNA test for dog kill but did not have stoat kill injuries.

Parua Bay/Whangārei Heads radio monitored kiwi	
Chookie	Well settled in his nesting area of pines and natives at the SW end of Martins' Owhiwa Road block. A big 12.5 hours nightly activity so he should be feeding up ready for breeding.
Malaika	In pampas, in the young pine block, 200m from Chookie on Martins' block Owhiwa road and hopefully she gets much closer to him for breeding. Her activity is averaging 11 hours with the odd lower night.
Valentine	After giving me the run around for the last month or so I haven't even managed to get a signal from her transmitter this month. I will keep searching wider- she could be anywhere in the wider Parua Bay area.
Ross	He has moved away from his buddy Pepi and is now up the top end of Pepi Road. He might find a girl there to breed with.
Pepi	He has remained in a similar area to where he and Ross have been previously – the west side of Pepi road. I caught up with him in the pampas for his 6 monthly band change and check. He was a healthy 2000g (down from his fat 2300g back in November). His bill was 104mm long – the same as back in November when I first found him. This means that he is definitely an adult male as suspected! (see pic) His being with another male previously is rare behaviour for kiwi. It will be interesting to see if he goes on to find a female mate.
Teina	He is in dense pampas at the northern end of the Martins' block Owhiwa Road. His transmitter change is due but he is proving elusive in his pampas warrens. 11.5 hours nightly average.
Beach Girl	In native bush just north of Martins' block, off Ross Road. 11.5 hours nightly activity. She is not that far from Teina.
Wally	Wally is down by the Pataua estuary edge at the end of Campbell Road and has a nightly activity of 11.5 hours. I caught up with him for his transmitter change, he was in good condition and 2100g (see pic).
Pakipaki	After returning to the McLeod Bay Horse Paddock last month she has once again headed back to the pampas below the Manaia Club. A pair has been heard calling there. Her nightly activity is 10.5 hours.

Todd Hamilton
Backyard Kiwi Project Manager • www.backyardkiwi.org.nz

Onerahi Garage

WOOF, REPAIRS,
SERVICING, CAMBELTS,
TYRES, BATTERIES,
BRAKES, SUSPENSION,
BOAT & CAR TRAILER SALES
PICK UP/DROP OFF, COURTESY CARS

1 CHURCH ST ONERAHI T. 09 436 5971

automotive solutions GROUP

[E. admin@onerahigarage.co.nz](mailto:E.admin@onerahigarage.co.nz)

Collier & Jones DENTURE CARE

09 438 8076 / 114a Bank St, (Opp Jimmy Jacks)

NEW DENTURES
Whatever your needs are in the way of dentures, talk to us!

OLD DENTURES
✓ Relined
✓ Repaired
✓ Cleaned

• Free Examination • No Obligation • Quality Assured • Eftpos Available • Winz Quotes •

Outback Adventures

Libby and Pete Urbahn live in Boeing Road in Onerahi. They are back after 26 years in Australia, 11 of those travelling in the Outback. This is their story...

Adventure 1: 'The Road Less Travelled'

Ever watched 'Outback Truckers' on TV? A road-train barrelling along in a cloud of red dust? If so, then you'll have some idea of what we faced driving the Gulf Track between Borroloola in Australia's Northern Territory and Hell's Gate in Queensland. 'Bloody track'll smash ya rig to bits, mate,' the locals said about the 320km of rugged road in northern tropical Australia.

That night, observing the Outback night sky in the tiny Aboriginal community of Borroloola, the lure of some real remoteness gripped us as we prepared our rig, fixing confluence to the back window of the car and sealing up potential dust holes. The next morning we set off, soon teetering on the bank of our first wet river crossing, our minds flooding with images of the crumpled vehicles at the back of the Borroloola garage and thoughts of crocodiles ready to snap at our tyres.

As we edged forward onto the river's rocky bottom, the caravan made alarming noises bumping behind our 4x4 as we created an impressive bow-wave. Bump by bump, boulder by boulder, we clunked across, our eyes ever watchful for crocodilian silhouettes. After what seemed like forever, we reached the opposite bank, engaged second gear, relaxed our shoulders and gulped for breath.

Five more river crossings followed, some with precipitous approaches and exits. At every one, we stopped and observed the depth of the water, the way it swirled around the boulders and any unusual obstacles brought down in the latest flash



Libby and Pete in the Outback

flood. We scrutinised other vehicles' course and speed, quickly learning the importance of allowing the water to resettle to view the river bottom and spot any Salties.

That night, we camped off the road in the bush, the Outback sky fast becoming a vault of dark blue speckled with diamonds as breathtaking views of the Milky Way enveloped us. Our time-lapse photos later showed the curious curving progression of orbiting stars, simultaneously eerie and awesome.

Next morning, the road was even more heavily corrugated so we maintained a modest 7kph, weaving back and forth to find 'the sweet spot', as we became acquainted with every eucalypt growing either side of the road. It would have been quicker to walk to Queensland. Occasional B-double stock trucks and huge off-road rigs sped past, plumes of orange dust smothering us in choking swathes of red grit. We discovered trucks often travelled in pairs, so we quickly learned to wait for the second one to swathe us in the dust cloud.

Travelling the Gulf Track was a once-in-a-lifetime experience among the myriad of memories from our years of Outback travel. After 18 hours of painstakingly slow driving, feeling exhausted, dusty and relieved, we miraculously spanned the distance. We'd negotiated hazards, drove kilometres in single figures, and experienced true remoteness. With our last litre of fuel sloshing around in our tank, we breathed a sigh of relief to see the rough hand-written sign for Hell's Gate. To travel this iconic Aussie Outback road you have to be well-prepared, self-reliant, and just a tad crazy. For anyone contemplating it, we say, 'Go for it, mate ... but take it easy. Take your time. Lose your watch. Reduce your speed to single figures. Enjoy every kilometre. You'll have a ball.'



Typical wet river crossing

Sailing News Update from Sail Northland

Sail Northland ran an April Holiday Programme in the school holidays which was a lot of fun, even in spite of the weather.

A NEW Winter Sailing Programme is about to begin...

A High School Sailing Academy will be running on Wednesday afternoons for Whangārei Girls' & Whangārei Boys' High Schools academy students to work on performance racing and team sailing skills, ready for the rescheduled National date for the NZ Schools' Team Racing National Championships - Monday 3rd to Friday 7th October 2022.

Winter Saturday Sailing will be available every second week (in the morning) for sailors that have participated in a learn to sail course or above, followed by the Winter Team Sailing (in the afternoon). More information can be found at www.sailnorthland.org.nz. If you would like to know more about what we do please subscribe to our website and/or follow us on Facebook or Instagram.

End of Term Maintenance Day, First Aid Course & BBQ

Sail Northland coaches and volunteers came together at the Whangārei Cruising Club facilities, at Parua Bay, during the school holidays to help tidy, clean and maintain equipment after a busy sailing season, in preparation for the new winter sailing programme.

Our junior assistant coaches joined our volunteers at the weekend in attending an awesome First Aid Course with Mark Judge at First Training. A big thank you to Mark and to the amazing team at Ray White Whangārei & Tutukaka - We Can Help With That Fund who donated funds towards this opportunity. It is much appreciated!

This was followed by our Sail Northland Team get-together over a lovely relaxed BBQ and shared meal. A great opportunity to catch up and swap sailing stories. We would like to take the opportunity to thank all our Team - coaches, assistant junior coaches and volunteers for their dedicated time and enthusiasm. We couldn't do it without you!

We will be offering our regular sailing opportunities again in Term 4 this year and welcome enquiries for people who are keen to have a go or register their interest with us at sailnorthland@gmail.com or 0277749145.

Sarah Ihaka & The Sail Northland Team





Open daily for breakfast and dinner

Featuring exciting seasonal menus, utilising delicious locally sourced produce in delightful taste combinations






Open 7 Days a Week • Closed Public Holidays
Breakfast Mon to Fri 7 – 10am • Sat/Sun 7.30 – 10.30am
Dinner 5.30 – 8.30pm
8 Waverley St, Onerahi – 436 2107 – info@flameshotel.co.nz
www.flameshotel.co.nz

www.treework.co.nz Branching Out Tree Care Ltd

Tree Care Specialists

Qualified Arborist
Ambassador for Trees - NZ Consultants, Practitioners & Data Collection



Arborists – Tree Surgeons

Phone us for prompt, personal services & quality workmanship

- All Aspects of Tree Work
- Complete Removals & Cleanup
- Experienced & Qualified Crew
- Horticultural Industry Trainer
- Stump Grinding
- Public Liability Cover
- Chipping & Mulching
- Specialist Climbing Team
- Large and Difficult Trees
- Single or Massive Projects
- Will beat other Quotes by 5%



www.treework.co.nz

09 436 4466

Mobile: 027 565 7794 or 0508 ARBORIST
Email: p_r.gosling@xtra.co.nz (272 67478)

PAUL GOSLING – ARBORIST

High Tide



NEW ZEALAND HYDROGRAPHIC AUTHORITY TIDE PREDICTIONS

Whangārei

Lat. 35°46'S Long. 174°21'E

JUNE 2022

N.Z. LOCAL TIMES AND HEIGHTS OF HIGH AND LOW WATERS

Day	Time	m	Day	Time	m	Day	Time	m	Day	Time	m
1 We	02:50	0.9	9 Th	02:29	2.7	17 Fr	03:37	0.5	25 Sa	04:48	2.8
	09:06	2.7		08:47	1.0		09:57	3.1		10:50	0.8
	15:04	0.7		14:59	2.6		15:56	0.4		17:25	2.7
	21:34	2.9		21:03	1.0		22:33	3.2		23:19	1.0
2 Th	03:31	0.9	10 Fr	03:23	2.7	18 Sa	04:31	0.6	26 Su	05:39	2.7
	09:44	2.7		09:42	0.9		10:51	3.0		11:40	0.8
	15:43	0.8		15:59	2.6		16:47	0.5		18:16	2.8
	22:12	2.8		22:02	1.0		23:26	3.2			
3 Fr	04:12	1.0	11 Sa	04:19	2.8	19 Su	05:25	0.6	27 Mo	06:27	2.7
	10:22	2.7		10:37	0.8		11:45	3.0		12:28	0.8
	16:21	0.8		17:01	2.7		17:40	0.6		19:04	2.8
	22:49	2.8		23:01	0.9						
4 Sa	04:53	1.0	12 Su	05:17	2.9	20 Mo	06:19	0.6	28 Tu	07:14	2.7
	11:00	2.6		11:33	0.7		12:39	2.9		13:13	0.8
	17:01	0.9		18:01	2.9		18:33	0.7		19:49	2.8
	23:27	2.8		23:59	0.8						
5 Su	05:36	1.0	13 Mo	06:14	2.9	21 Tu	07:14	0.7	29 We	07:58	2.7
	11:40	2.6		12:27	0.6		13:36	2.8		13:56	0.8
	17:41	0.9		18:58	3.0		19:30	0.8		20:30	2.8
6 Mo	00:07	2.7	14 Tu	00:55	0.7	22 We	02:09	3.0	30 Th	02:25	1.0
	06:20	1.0		07:11	3.0		08:08	0.8		08:39	2.7
	12:24	2.6		13:20	0.5		14:33	2.7		14:37	0.8
	18:25	1.0		19:53	3.1		20:28	0.9		21:10	2.8
7 Tu	00:51	2.7	15 We	01:49	0.6	23 Th	03:03	2.9			
	07:06	1.0		08:07	3.0		09:03	0.8			
	13:11	2.6		14:13	0.4		15:32	2.7			
	19:12	1.0		20:47	3.2		21:27	1.0			
8 We	01:38	2.7	16 Th	02:43	0.6	24 Fr	03:56	2.8			
	07:55	1.0		09:02	3.1		09:57	0.8			
	14:02	2.6		15:04	0.4		16:30	2.7			
	20:05	1.0		21:40	3.2		22:24	1.0			

NEW ZEALAND HYDROGRAPHIC AUTHORITY TIDE PREDICTIONS

Whangārei

Lat. 35°46'S Long. 174°21'E

JULY 2022

N.Z. LOCAL TIMES AND HEIGHTS OF HIGH AND LOW WATERS

Day	Time	m	Day	Time	m	Day	Time	m	Day	Time	m
1 Fr	03:07	1.0	9 Sa	02:47	2.8	17 Su	04:12	0.5	25 Mo	05:05	2.6
	09:19	2.7		09:06	0.8		10:33	3.1		11:08	0.9
	15:16	0.8		15:28	2.7		16:28	0.5		17:47	2.7
	21:47	2.8		21:31	1.0		23:06	3.2		23:42	1.1
2 Sa	03:48	1.0	10 Su	03:44	2.8	18 Mo	05:04	0.5	26 Tu	05:56	2.6
	09:58	2.7		10:04	0.8		11:25	3.0		11:59	0.9
	15:55	0.8		16:32	2.8		17:19	0.6		18:37	2.7
	22:24	2.8		22:33	0.9		23:56	3.1			
3 Su	04:28	0.9	11 Mo	04:45	2.8	19 Tu	05:55	0.6	27 We	06:45	2.6
	10:36	2.7		11:03	0.7		12:17	2.9		12:46	0.9
	16:34	0.8		17:36	2.9		18:10	0.7		19:23	2.8
	23:02	2.8		23:34	0.8						
4 Mo	05:09	0.9	12 Tu	05:48	2.9	20 We	06:46	0.7	28 Th	07:32	2.6
	11:16	2.7		12:02	0.6		13:09	2.8		13:29	0.8
	17:14	0.8		18:37	3.0		19:03	0.8		20:05	2.8
	23:41	2.8									
5 Tu	05:51	0.9	13 We	06:50	2.9	21 Th	07:37	0.7	29 Fr	08:15	2.7
	11:58	2.7		12:58	0.5		14:03	2.8		14:11	0.8
	17:57	0.9		19:35	3.1		19:58	0.9		20:44	2.8
6 We	00:22	2.8	14 Th	01:31	0.6	22 Fr	02:28	2.8	30 Sa	02:42	0.9
	06:35	0.9		07:49	3.0		08:29	0.8		08:55	2.7
	12:43	2.6		13:52	0.4		14:59	2.7		14:50	0.8
	18:43	0.9		20:29	3.2		20:55	1.0		21:22	2.9
7 Th	01:06	2.8	15 Fr	02:26	0.6	23 Sa	03:19	2.7	31 Su	03:22	0.9
	07:21	0.9		08:46	3.1		09:22	0.9		09:34	2.7
	13:33	2.6		14:45	0.4		15:57	2.6		15:30	0.8
	19:33	1.0		21:23	3.3		21:53	1.1		21:58	2.9
8 Fr	01:54	2.8	16 Sa	03:20	0.5	24 Su	04:12	2.6			
	08:12	0.9		09:41	3.1		10:16	0.9			
	14:27	2.7		15:37	0.4		16:54	2.6			
	20:30	1.0		22:15	3.3		22:49	1.1			

Information courtesy of LINZ • www.linz.govt.nz



THE PROPELLER SHOP

NOW PART OF WHANGAREI MARINE SERVICES

SALES • SERVICE • REPAIRS

09 438 3296 • 021 260 0792
admin@marinetechs.co.nz
93 Port Road, Whangārei
www.whangareimarineservices.co.nz



Kayakers from Whangārei Boys High School. Photo by Rose Tantau

FRANCHISED LAWN & GARDEN BUSINESS FOR SALE

Well established, with loyal customer base within Whangarei and surrounds. Suitable for a team of two or sole operator.

**FOR FURTHER INFORMATION, PHONE
RAEWYN 021 196 6702**

When things don't go well!
We are here to care ... offering ...

- 🐾 Accident and emergency care
- 🐾 Health checks and vaccinations
- 🐾 Trained veterinary nurses
- 🐾 Open 7 days
- 🐾 24 hour emergency care

PET CENTRES
PH 470 1060

Whangārei – 16-18 Maunu Road
Hikurangi – Cnr George & Park Sts
Onerahi – 165 Onerahi Road

Like us on Facebook www.northvets.co.nz

Learn something NEW...

- Increase your knowledge
- Discover a new hobby
- Meet new people
- Upskill for work

OFFERING EVENING CLASSES & WEEKEND WORKSHOPS FOR ADULTS

Affordable, Accessible Lifelong Learning

CEW
COMMUNITY EDUCATION WHANGAREI

Ph 09 435 0889 cew@kamohigh.school.nz www.cew.ac.nz

BRICON
Building & Construction

- New Builds
- Extensions
- Renovations

021 022 45383
briconbuild@gmail.com
www.briconbuild.co.nz

Lawn Mowing by your Local Expert

- RESIDENTIAL MOWING
- COMMERCIAL MOWING
- HEDGES & PRUNING
- GARDENING / SPRAYING
- SECTION CLEAN-UPS
- RUBBISH REMOVAL
- GUTTER CLEANING
- ALL WORK GUARANTEED

Jim's Mowing

Phone 0800 454 654
BOOK ONLINE at www.jimsmowing.co.nz
Fully Insured and Security Checked for your peace of mind

HOPEONERAHI
PRESBYTERIAN CHURCH

135 Onerahi Road • Office: 438 1667

Sunday Worship @ 9.30am. All Welcome!

Sit Fit \$4 – Monday 10.15am • Hope Onerahi Church Hall
Contact Christine Fraser 027 573 6346

Mainly Music in the Church Hall – Every Wednesday
10am (during school term). \$4 per family
Contact Nancy Dodds - 436 1444

RAUMATI CRESCENT CHAPEL Onerahi

Teaching Ministry 10am every Sunday

A place to believe, belong, and become!

09 436 0150
09 436 5613

W.H.A.T. AUTOMOTIVE
Your local professional automotive repair centre.

whangarei.heads.autos@gmail.com
www.whatautomotive.nz

ONERAHI COMMUNITY CHURCH
Sundays 10am Raurimu Ave School Hall

If you confess Jesus is Lord and believe God raised Him from death, you will be saved (Romans 10:9).

VACANT

Contact: hello.onecc@gmail.com - 021 023 897 01

Coming dates & events

June / July 2022	
June/July	Matariki Festival, Pipiri - Hongongoi. See the Matariki Festival Whangārei Facebook page to keep up with events offered
June 5	World Environment Day
June 5	Whangārei Chess Club to meet at Whangārei Central Library, Whangārei, Sun 5 Jun 10:00am
June 6	Queen's Birthday weekend
June 10 - 11	Pehiaweri Marae - Ko māwharu te Marama. All welcome. No cost, no registrations, 5pm start time at venues. Refer to https://www.facebook.com/ngatoki.ongapuhi/ for more information
June 24	Matariki Public Holiday
June 11 - 23 July	Planitarium Northland - Matariki Night Sky. Please see https://events.humanitix.com/matariki-winter-sky for times and tickets
June 30	7 Days Live Tour at McKay Stadium, Whangārei, Thu 30 Jun 7:30pm
July 2	Kids Pirate Sail followed by the Harbour Sail on the R. Tucker Thompson, Port Nikau, 360 Port Road, 11:30 am and 2:30pm, Saturday 2 July
July 9	PLUNGE! Comics, Anime and Pop Culture Convention to be held at ONEONESIX, 116a Bank Street, Whangārei. 11:00am - 4:00pm
July 23	Matariki Glow Show, at Forum North. Refer to https://www.glowshow.co.nz for further details
July 20 - 22	The Whangārei Night Lights Festival - Experience more than 2,500 square metres of natural spaces, waterways and buildings lit with over 1 km of lights and art. Supported by Northland performers from diverse arts including fire spinning, circus, dance and entertainers. 6pm - 9pm, tickets available at - www.whangareilights.com .
Regular Events	
Onerahi Sit-Fit	Hope Onerahi Church, 137 Onerahi Road, Mondays, 10.15 am
Onerahi Hall Market	Saturdays 8am-12pm. There will be NO market on Sat 30 July, 13 or 27 August , Starting again Sept. Plants, garden produce, jams/pickles, art/craft, 2nd hand goods. Stalls available from \$7, phone Jenny (09) 436 0009
Onerahi Orbit is not responsible for any events listed here that are cancelled due to COVID-19 or for any other reason. Please check with local event organisers to see if the event is confirmed or cancelled	

Venues available for hire in Onerahi, Parua Bay and Whangārei Heads area

Onerahi Community Hall & Community House	Julie Dennis	09 436 4439 or 021 034 9943
Onerahi Bowling Club	Roger Kerr-Davis	027 390 7185
Onerahi Rugby Club	Fiona Raymond-Paikea	onerahirugby@yahoo.com.
Onerahi Soccer Club	Fiona Ellis	onerahifootballclub@outlook.co.nz
Hope Church	Secretary	09 438 1667
Raurimu School Hall	School Office	09 436 0820 Ext. 2
St. Stephen's Church Hall	Paul Doherty	021 189 4797 or 09 436 0207
Tamaterau Hall	Dorothy Gatland	021 119 0089
Parua Bay Comm.Centre	Kirsty	bjandkirsty@slingshot.co.nz
McLeod Bay Hall	Norma	09 434 0909
Taurikura Hall	Meg Mclsaac	09 434 0096
Whangārei District Council Hotline: 0800 932 463		Onerahi Police (09) 436 0222

Dempster & Hill ELECTRICAL
We're your electricians

24 HOURS A DAY, 7 DAYS A WEEK

09 435 0382

Specialists in commercial, light industrial and rural electrical

We respond quickly to solve your electrical problems

- SiteSafe Member • Member of ECANZ •
- Members NZ Trade Group •
- Member - Private Security Personal Authority •

www.dempsterandhill.co.nz

