



## Whangārei's new MP: Emily Henderson

For the first time in 45 years Whangārei has elected a Labour Party candidate. It is an honour to be your new MP.

I bring skills gained as a lawyer, law reformer and mother of four. I bring the values I was raised with - to work hard for justice and in service to others. I bring an absolute dedication to our community, our environment and especially our children.

The 2020 campaign was a whirlwind and winning was something hoped for, but unexpected.

The community-focused approach the campaign took will continue; keep an eye on our Facebook page and newspapers like this one, for when and where we'll be holding mobile constituency meetings.

There is a heap of work to do and Whangārei's new team is already hard at work to give our electorate the best possible service.

We need to improve the lives of our poor and vulnerable, lifting people out of poverty so that opportunities exist for all of us. We need to build an economy that provides plenty of opportunities for jobs and entrepreneurship, while thinking forward to protect our natural heritage, so that New Zealand's forests, rivers and oceans are healthy. We need our infrastructure to be fit for purpose and meet the demands of our growing population.


Northland's tech sector is another high-impact economic driver and it holds the key to new, highly paid job and education opportunities for our young people and our career-changers.

I would like to acknowledge the service and commitment of our outgoing MP, Shane Reti. I have made contact with Dr Reti to develop a relationship so that we can work together for our region and Shane has agreed - we can do so much more together than apart.

If you would like to get in touch, or to join our team of volunteers, you can email me on [emily.henderson@labour.org.nz](mailto:emily.henderson@labour.org.nz). For those who voted for me and for Labour, thank you.


*Emily Henderson, MP*





Let's Go...

with Jo!



Joanne Stevens

027 536 0369

joanne.stevens@raywhite.com

Licensed Real Estate Salesperson (REAA2008)

# Kia Ora

Welcome to another Onerahi Orbit magazine, celebrating the people, places, features and history that make our place unique.

Since our last issue we have elected a new MP - congratulations to Emily Henderson, Whangārei's first Labour MP since 1975. Congratulations too to our long-serving outgoing MP Dr Shane Reti on becoming National Party Deputy Leader. As a list MP, Dr Reti will continue to work for the people of Northland.

More congratulations, to local adventure park HeadsUp Adventures, for winning the Northland Regional Council

Environmental Business Champion Award at Westpac Northland Business Champions 2020 awards.

International Volunteer Day is 5 December. Without the hard work of volunteers, many of the good things that the Orbit celebrates would not happen, so a big thank you to everyone who contributes their time and energy to our community.

Wishing you all happy and safe holidays,

Nga mihi from the Orbit team,

*Heather, Megan, Rose and Shona*

## Contents

Whangārei's New MP, Emily Henderson. . . . .1  
 Dragonfly Springs News, Onerahi Kindergarten News . . . . .3  
 Camera Obscura . . . . .4  
 Steiner School Coming to Onerahi . . . . .5  
 Schools News . . . . .6  
 NRC Councillor Amy Macdonald. . . . .7  
 Dr Shane Reti, National Party Deputy Leader . . . . .8  
 Technology News - WDC Cr Vince Cocurullo. . . . .9  
 Tiakina - Predator Free Onerahi. . . . .10  
 Predator Free Whangārei . . . . .11  
 Citizens Advice Bureau . . . . .12

Taonga of Whangārei Heads. . . . . 13  
 From Onerahi to Sark . . . . . 14  
 Onerahi Volunteer Fire Brigade Round-up . . . . .16  
 Fire Service Volunteer - Aaron Cozens . . . . .17  
 Book Review - The Light is Inconsolable. . . . . 18  
 Weed Action Group . . . . . 19  
 Tides Charts Dec & Jan . . . . . 20  
 Tides Charts Feb & Mar. . . . . 21  
 Sailing Northland Summer Programme . . . . . 22  
 Sailing Northland Spring Schools Regatta . . . . . 23  
 Coming Events . . . . . 24  
 Venues for Hire. . . . .24

### ADVERT SIZES & COSTS:

|              |  | BLACK & WHITE | COLOUR |
|--------------|--|---------------|--------|
| Full page    | 270mm high x 190mm wide                              | \$600         | \$900  |
| Half page    | 270mm high x 90mm wide OR<br>135mm high x 190mm wide | \$350         | \$500  |
| Quarter page | 135mm high x 90mm wide OR<br>64mm high x 190mm wide  | \$180         | \$250  |
| Eighth page  | 65mm high x 90mm wide                                | \$ 85         | \$150  |
| Block advert | 40mm high x 60mm wide                                | \$ 40         | \$ 75  |

GST not applicable.  
 Invoices will be emailed or posted after the publication date.

Electronic version of the Onerahi Orbit also available at:  
<https://www.issuu.com/onerahiorbit>

Published in April, June, August, October, and December.

The Onerahi Orbit is a not-for-profit publication owned by the Onerahi Community Association, that reports the good news in Onerahi, Parua Bay, Pataua, and Whangārei Heads. 4100 copies are printed by Jeff Oliver Print and distributed by volunteers throughout this area; readership is approximately 12,500.

No part of this publication may be reproduced without the prior written permission of the editor, writers, and owners of Onerahi Orbit.

Follow us on Facebook  
[www.facebook.com/onerahiorbit](http://www.facebook.com/onerahiorbit)



Editor: Heather Bell 027 421 7849  
 Email: [onerahiorbitmagazine@gmail.com](mailto:onerahiorbitmagazine@gmail.com)

Advertising: Shona Beeston 027 654 3999

Design: Megan Lavin-McIsaac 022 641 9786  
 Email: [graphics@megatype-publishing.co.nz](mailto:graphics@megatype-publishing.co.nz)

Accounts: Rose Tantau 438 5499  
 Email: [ccoca@xtra.co.nz](mailto:ccoca@xtra.co.nz)

Deliveries: Bob Smith 436 3681

# Dragonfly Springs News

**Sunday October 25th:** a group of 30 from the Small Farm Holders' Association spent half a day here learning about the benefits of wetlands, trapping and being environmentally responsible.

**Wednesday November 11th:** 5.15pm to 6.15pm - 5 to 8 year old Kea Shackleton Sea Scouts came to earn their Environment Badges.

**Thursday November 5th & Wednesday November 25th:** students from Christian Renewal School came for environmental studies.

**Wednesday December 2nd:** 20 plus students from Whangārei Intermediate School for a day doing mahi and environmental studies.



**Thursday December 3rd:** 100 students and 22 adults from Totara Grove Primary School - environmental learning; challenging with such a big number of primary schoolers.

We are hoping to plan an end of year 'Sandwiches in the Sanctuary' public open day.

**2021:** No events are finalised for 2021 yet; some in the melting pot but they require lots of energy and money.

As for the storm damage repair, we are hoping for sponsors to help with the works needed.

Happy Christmas and New Year to all our supporters, sponsors, helpers, and community,

*from Jeremy Busck and Pamela Winter*

## Onerahi Kindergarten News



Onerahi Kindergarten staff and students had a special celebration recently: they have received a Bronze Enviroschools Award for their good practices. They grow food, make compost, have worm farms, are involved in the local community, and try to live and operate sustainably. Congratulations!

## VOLUNTEERS REQUIRED!



We need delivery people to drop off the Onerahi Orbit in their local area. The Orbit comes out five times a year.

If this sounds like you, or someone you know, please call Bob Smith on 09 436 3681.

## NEWBERRYS FUNERAL HOME

*Serving Northlanders since 1866.*

Have you had that difficult discussion with your family?

Do you have a Pre Need plan in place for your funeral?

Plan the farewell you would want with the funeral home that has been here since the days of the covered wagon.



Get your Pre Need Pack today

**438 2644**

or email [newberrys@xtra.co.nz](mailto:newberrys@xtra.co.nz)  
[www.newberrys.co.nz](http://www.newberrys.co.nz)

## onerahi physio.

**Elsbeth Sugrue**  
**Taylor Wilkes - Nicole Dempster**  
**Garby Smith - Ricky Brijis-Blaak (Locum)**

Onerahi Shopping Centre  
 Call us on 4360919 for an appointment  
 No GP referral required [www.onerahiphysio.co.nz](http://www.onerahiphysio.co.nz)



"Providing for the healthy bodies and healthy minds of our kiwi kids"

PH 436 3085  
[www.kiwikidselect.co.nz](http://www.kiwikidselect.co.nz)

4 Waimahanga Rd, Onerahi

# Camera Obscura / Timatatanga Hou

Whangārei's newest attraction opened on Friday 20 November, almost ten years after planning began, and close to a million dollars was raised, to create this massive camera and sculpture combined. The opening ceremony was also a



Camera Obscura sculpture

handing-over ceremony, where the Camera Obscura was given to the Whangārei District Council for all people to enjoy.

The beautiful steel structure sits beside the Hatea River, its ship-like appearance reflecting the area's maritime past; and is sited at the end of Te Matau A Pohe, the lift-up bridge. Visitors who enter the sculpture will be inside a constantly changing upside-down image of the bridge, river, and sky.

Whangārei Heads resident and professional photographer Diane Stoppard had the initial idea, and was project manager. Architect Felicity Christian and sculptor Trish Clarke joined Diane to make up the three-woman team that drove the project to its successful completion.

The Provincial Growth Fund covered half the cost, and public donations and business sponsorships paid for the rest. Many businesses involved in



Inside the Camera Obscura



Left: Trish Clarke, sculptor; centre: Diane Stoppard, project manager and photographer; right: Felicity Christian, architect.

the project donated their services. Thanks and congratulations to all involved.

The Camera Obscura is open from dawn to dusk, and entry is free.

**Kirsty McCorkindale**  
Residential, Lifestyle and Coastal  
Mobile: +64 21 555 357  
Office: +64 9 470 0960  
kirsty.mccorkindale@bayleys.co.nz

**Sam Swinburne**  
Residential, Lifestyle and Coastal  
Mobile: +64 27 246 5504  
Office: +64 9 470 0960  
sam.swinburne@bayleys.co.nz

**Jude Copland**  
Residential, Lifestyle and Coastal  
Mobile: +64 21 747 411  
Office: +64 9 470 0960  
jude.copland@bayleys.co.nz

## ALTOGETHER BETTER

**BAYLEYS** Coastal Specialists

84 Walton Street, Whangārei

**BAYLEYS**  
HARVEY KALLES REAL ESTATE LTD. LICENSED UNDER REG. ACT 2008

# Steiner School coming to Onerahi



Tessa, Fiona (teacher) and Amy at the market

“The need for imagination, a sense of truth and a feeling of responsibility, these are the three forces which are the very nerve of Education.”

This is a quote from Rudolph Steiner, an Austrian philosopher from the 1800s. He believed that schools needed to encompass the whole child, their body, soul and spirit. The role of education is to awaken people and allow them to be who they are. His first school opened in 1919; now Steiner/Waldorf schools are the largest independent school movement in the world.

As the mother of a toddler who loves eating fruit straight from the tree and spends hours in the backyard with his chooks, I haven't felt enthusiastic about sending him to a big school with TV screens in the classrooms. I want something else, another option, and so does my sister. Together we have embarked on a journey to open a Steiner primary school in Whangārei. The timing is right; this has been a year of change and new ideas. We can see this from the very warm and enthusiastic response we have had from the parenting community. We had a wonderful afternoon tea on the 21st of November and our community is growing by the day.

Steiner schools vary in each country to reflect the native culture, but they all have some key attributes. The curriculum is structured around the developmental growth of children, allowing them to learn when they are ready. This is why children partake in play based education until their seventh year. There is an emphasis on learning from nature: the grounds have gardens that the children play in and learn from. The classrooms and teaching resources are also made using natural materials. Subjects aren't taught in a compartmentalised manner - biology can be taught whilst gardening and children can

do art whilst learning about mathematics. Children learn life skills such as growing and cooking food. Steiner schools pay attention to and celebrate the seasons. This creates a connection to nature and the Earth we inhabit. Teaching children takes a community. Parents are encouraged to participate in the running of the school, from organising festivals to working bees. Parents get to know each other and a strong community naturally forms.

To date, we have a potential site in Onerahi, and a wonderful teacher from McLeod's Bay. We aim to open one class, but if we have the demand and support we can open two. Our next task is to commence the process of applying to the Ministry of Education for permission to open the school; this takes approximately one year.

Our vision is to create a school which protects and nurtures children in a homelike environment, where children are received in reverence/respect, taught in love and go forth in freedom.

If you would like more information please contact Amy and Tessa at whangareisteinerschool@gmail.com or find us on Facebook.

Tessa Lagerstedt

# MPC COMPUTERS

SALES :: SERVICES :: SOLUTIONS

- Laptop/Desktop Repairs
- Hardware and Software Sales
- Web Hosting & Domain Names
- Home and Office Networking
- Confidential Callout Service

Shop Online for your convenience: [www.mpccomputers.co.nz](http://www.mpccomputers.co.nz)

Call Mike 434 0229 • 021 136 4637  
email: [mike@mpccomputers.co.nz](mailto:mike@mpccomputers.co.nz)

# Merry Christmas

|  |   |  |
|--|---|--|
| <p><b>Monday 14 December</b><br/>7.30am – 8pm</p> <p><b>Tuesday 15 December</b><br/>7.30am – 8pm</p> <p><b>Wednesday 16 December</b><br/>7.30am – 8pm</p> <p><b>Thursday 17 December</b><br/>7.30am – 8pm</p> <p><b>Friday 18 December</b><br/>7.30am – 8pm</p> <p><b>Saturday 19 December</b><br/>8am – 8pm</p> | <p><b>Sunday 20 December</b><br/>8am – 8pm</p> <p><b>Monday 21 December</b><br/>7.30am – 8pm</p> <p><b>Tuesday 22 December</b><br/>7.30am – 8pm</p> <p><b>Wednesday 23 December</b><br/>7am – 8pm</p> <p><b>Thursday 24 December</b><br/>7am – 8pm</p> <p><b>CHRISTMAS DAY</b><br/>Closed</p> | <p><b>Boxing Day</b><br/>8am – 8pm</p> <p><b>Sunday 27 December</b><br/>8am – 8pm</p> <p><b>Monday 28 December</b><br/>7.30am – 8pm</p> <p><b>Tuesday 29 December</b><br/>7.30am – 8pm</p> <p><b>Wednesday 30 December</b><br/>7.30am – 8pm</p> <p><b>New Years Eve</b><br/>7.30am – 8pm</p> <p><b>Friday 1 January</b><br/>8am – 8pm</p> <p><b>Saturday 2 January</b><br/>8am – 8pm</p> <p><b>Sunday 3 January</b><br/>8am – 8pm</p> <p style="font-size: 2em; color: red;">Happy New Year!</p> |
|--|---|--|

## School News

### ONERAHI PRIMARY

Children excitedly returned from the holidays to find a new scooter track established on the field. With dips and curving corners, multiple pathways, and road signs, the scooter track has become a bustling part of the school. Along with the bike track and school bikes also running smoothly, there is a real need for speed at Onerahi School!

Summer holidays are rapidly approaching, and staff members believe that having strong water safety skills is paramount to getting the most out of

our beautiful island nation. This year the school pool is open in term 4 with classes running through a comprehensive, and fun, water safety programme. Children are exploring risk identification, the use of floatation devices, how to respond to rips, as well as many other crucial aspects of water safety.

"As challenging as this year has been, it has also brought us closer together. We would like to share our appreciation for our community, our children, and our staff. The support we have provided one



Onerahi Primary pupils enjoying their new scooter track

another throughout the year has made a real difference,"

said Deputy Principal Danny Hamilton. Jodi Bryant

### RAURIMU PRIMARY

We have seen a very different school year this year; for everyone it has been a year of firsts. We learnt that learning at home was achievable, and for some students new knowledge through their own inquiry learning brought out new passions and skills.

Our year was filled with

environmental studies and outings into the community to put our findings in place. We took the opportunity to participate in water safety with EMR, Water Safe and Tutukaka Surf. We are a nation of water lovers, so this was a great chance to refresh and upskill our tamariki. Our senior students

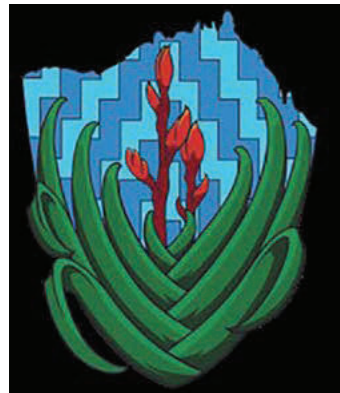
created masterpieces at Tech class, and we started our own cooking class here at the school and adult Te Reo Maori evening class.

Our biggest change this year was the introduction of our new school logo. This has been a long process, incorporating who we are as a school with our

surroundings. We love the final result, and this is another step in our journey.

We thank everyone who has supported us this year, wish you all a happy and safe summer break and look forward to next year's adventures.

School Administrator  
Nicki Powell



Our new logo



Staff having fun on Wig Wednesday



Clocks made by Senior students

**MASSAGE THERAPY**

**Wendy Huddleston**  
(Dip in Massage • Dip in Sport)  
**Gift Vouchers Available**  
ph/txt 021 767 887

**Onerahi Pharmacy**

116 Onerahi Road  
**Phone: 09 436 0567**  
www.onerahipharmacy.nz

**Unichem**  
care + advice  
Your local health professional

## Northland Regional Councillor, Amy Macdonald

Kia ora!  
I hope the recent warm wet weather has your gardens thriving! My water tank is finally full so that's a great feeling at the start of summer....

Earlier this month I caught up with a team from Whitebait Connection, NorthTec, Sustainable Coastlines, NRC, and WDC, to install a litter trap in the stormwater drain at the Onerahi Community Centre. It was great to learn about this partnership project, see the trap and how it works, and watch the installation. These traps are being installed around Whangārei to catch rubbish that is washed into stormwater drains, preventing it from entering our harbour. NorthTec has a research project to regularly empty the traps and analyse the rubbish that has been caught; and to build a data set on types of litter and where it is coming from. These data will inform future work to reduce plastic rubbish getting into Northland's waterways and harbours, so it's a project with real benefits for our environment.

On Friday 6th November I had the pleasure of attending the Westpac Northland Business Champions 2020 awards. It was a great event, celebrating Northland businesses and their courage and adaptability in the face of a very challenging year. It was exciting to see the team from HeadsUp Adventures, our local downhill adventure park, win the Northland Regional Council Environmental Business Champion Award. Congratulations to Ange and Warren and their hard working crew at HeadsUp!

At Council I'm keeping very busy and still really enjoying

the challenge of this role. We're preparing for consultation with our communities on our Long Term Plan for the next 10 years – so early next year we'll be seeking feedback on the work we propose for Northland. I'm also one of three councillors who are sitting in a governance role for the Kaipara Moana Remediation project. The Kaipara catchment encompasses about 1/3 of Northland's land area, so it's a huge project. The goal is to transform the way the catchment is managed, to achieve river and harbour health into the future.

As always, I'm happy to hear from you if you have questions or issues you'd like to raise – amym@nrc.govt.nz.

Nga mihi

Councillor Amy Macdonald, Northland Regional Council

Disclaimer – this is my personal opinion and not that of the Northland Regional Council



Cr Nicholas Connop (WDC) and Cr Amy Macdonald (NRC) checking out the litter trap before it is installed in the Onerahi Community Centre carpark

**MAXIMISE REAL ESTATE**

Maximise your property's net sale price without having to compromise on quality or service

**1.95%**

Super low selling fees

Call Tracey Lovelock-Butler  
027 8595 777  
tracey@maximise.co.nz  
Licensed REA Act 2008

agent of the year awards  
New Zealand

**USS**  
WARNING  
4302303  
UNITED SECURITY SERVICES

Next Generation of Wireless Security Systems  
Contact United Security Services  
ask about the next generation alarm system  
09 4302303 or sales@unitedsecurityservices.nz

**BRUCE WEBB GLASS**  
Independent Glazier

**FAST PANE RELIEF SERVICE**

phone **438 4332**  
mobile **027 492 2772**



**Collier & Jones**  
**DENTURE CARE**  
09 438 8076 / 114a Bank St,  
(Opp Jimmy Jacks)

**NEW DENTURES**  
Whatever your needs are in the way of dentures, talk to us!

**OLD DENTURES**  
✓ Relined  
✓ Repaired  
✓ Cleaned

• Free Examination • No Obligation • Quality Assured •  
• Eftpos Available • Winz Quotes •



**Specialising in Family Law, Conveyancing, Commercial Law, Wills, Trusts and Estates, Enduring Power of Attorney and welfare and property orders**

**Wills Westenra**  
LAWYERS

Megan Wills LLB, BA  
Bridget Westenra LLB  
Maria Davies LLB (Hons), BA  
Helen Kaimarama LLB, BA  
Kayla Herbert LLB  
Jasmine Kim Dip.Law

**Level 3, Tai Tokerau Building  
5 Hunt Street, Whangārei  
Phone 459 7000**

[www.willswestenra.co.nz](http://www.willswestenra.co.nz)



**DR SHANE RETI MP**  
Based in Whangārei

**Working together**

P | 09 438 9992  
A | 105 Cameron Street, Whangārei  
E | shane.reti@parliament.govt.nz

Funded by Parliamentary Service & authorised by Dr Shane Reti MP-105 tower Cameron St, Whangārei

## Keep our DHB in Northland

I have always strongly backed our DHB and continue to do so. Our DHB stands up for us and fights our corner with government. I saw this up close when PHARMAC kept secret the 20,000 Pfizer Meningitis vaccines that would have vaccinated all Northland children. Northland DHB made strong representation and even gave me some staff to help with the privately funded, Rotary/Lions/Iwi/Community facilitated Meningitis vaccination project which we did at the low decile Hikurangi Primary School. I only wish we could have vaccinated more children at more schools.



In 2001, as a new DHB board member, one of our first tasks was to do a needs analysis so that we could really focus on Northland's needs. This supports a theme where Northlanders know best what Northland requires and for me now as an MP based in Whangārei, it continues to be true. My concern is that I am hearing progress towards a merger involving Northland DHB, something that was foreshadowed during the recent election. I

will get confirmation of this as soon as possible. However, many of us who have worked in the health sector for many years recall what it was like under RHAs when Northland was merged with Auckland – our voice was lost. We now need to be in front of any discussion that might diminish our local health service. When I have more certainty around this, I will be launching a parliamentary petition on Facebook and asking for your support to retain our local DHB.

Working together is my tag line and this will be us working together.

*Dr Shane Reti QSM,  
MP based in Whangārei,  
Deputy Leader of the  
Opposition*

**When things don't go well!**  
**We are here to care ...** offering ...

- Accident and emergency care
- Health checks and vaccinations
- Trained veterinary nurses
- Open 7 days
- 24 hour emergency care

**PET CENTRES**  
PH 470 1060

**Whangarei – 16-18 Maunu Road**  
**Hikurangi – Cnr George & Park Sts**  
**Onerahi – 165 Onerahi Road**

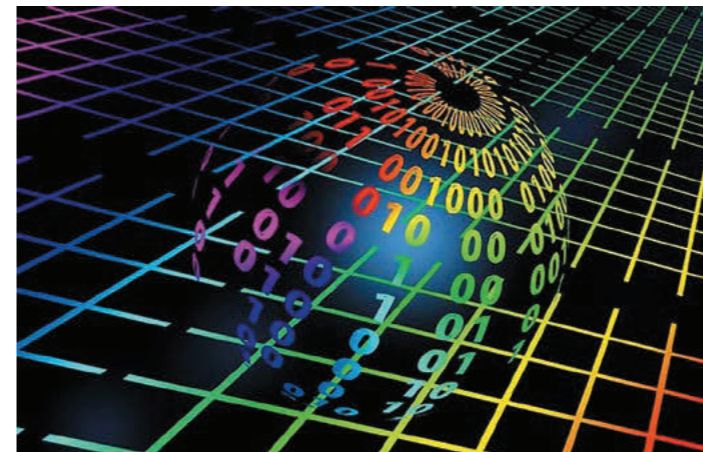
**NORTHLAND VETERINARY GROUP**

Like us on Facebook [www.northvets.co.nz](http://www.northvets.co.nz)



## Technology News from WDC Councillor Vince Cocurullo

### Technology has feelings?



How many times have you thought that your electronic devices have feelings and emotions, and that they respond to you depending on how you feel that day?

I'm here to dispel that myth: despite you feeling that your devices have feelings, in truth they don't. All technology is a series of "1's" and "0's"; they are either "On" or "Off", so no feelings involved, except for our own.

However I hear you say, "The computer just won't respond today, and we didn't load anything on it, so it should be working as normal." Sometimes patience is needed, and yes, I know that technology was meant to ensure that we don't need to be


patient. In today's modern world, Windows, Apple, and Android updates are happening a lot more than you might think. These updates are trying to plug holes in the software; holes that are being exploited by viruses or by those in the world who just like to cause problems.

As updates are happening on these devices, some of those "1's" and "0's" may be put in the wrong column or line. Which means that our trusted device sometimes appears to have a "meltdown" (in our view). Generally, over time these "1's" and "0's" get put back into the correct locations again. These updates sometimes happen at the worst times, as we are usually in a hurry. I always encourage my clients to take a step back, go for a walk, or even make a drink. The waiting may be stressful; however our electronic devices need that time to self-correct.

If you find these updates are happening a lot or even not completing properly, please do get hold of your local IT support person, as there may be other issues in the background that you may not be aware of, and those same "1's" and "0's" may need some help getting back into the right locations again.

So, to answer the question, "Does my technology have feelings?" No, it does not have feelings, but you do. I encourage you to practise a little patience as not everything needs to happen straight away. Plan the timing of your updates and make sure that you restart your devices from time to time.

Have a fabulous Christmas and New Year break, and remember, your IT people are here to help.



"Please cremate me. Don't put me in the ground where someone may dig me up if you move house."

The team at Stardust will give me a dignified farewell.

### Stardust Cremation Services

201 Te Rongo Road, Parua Bay

Phone 09 436 1333; Mobile 0274 960 462

Email [stardust@xtra.co.nz](mailto:stardust@xtra.co.nz)



IT • COMMUNITY PROJECTS • LOCAL ISSUES

Your Local Okara Ward Councillor

- COMPUTER FAILURE
- REMOTE ACCESS
- EMAIL TROUBLE
- NETWORKING

OR JUST SOME FRIENDLY ADVICE

P 09 4388 834

M 021 438 952

E [vince@cocurullo.co.nz](mailto:vince@cocurullo.co.nz)

W [www.cocurullo.co.nz](http://www.cocurullo.co.nz)



# Tiakina - first projects underway for Predator Free Onerahi

The Onerahi community is looking to become predator free as local schools, conservation groups and others band together to help protect their community's native biodiversity.

Tiakina Whangārei has identified Onerahi as an ideal location to become predator free because as a peninsula, it can be defended against reinvasion. There are also significant areas of forest around the suburb, meaning that the conservation outcomes for biodiversity would be very high.

A successful community meeting was held in October to

discuss how Tiakina Whangārei can help support Onerahi's mission to become a predator-free community.

Tiakina Whangārei coordinator Dai Morgan said it was a great turn out. "We really want to thank all those who came along to the community meeting. It's exciting to see the passion from the residents of Onerahi to get this project underway. There are so many opportunities for anyone in the community to get involved!"

"A steering group is being put in place and if you're passionate about helping to protect the natural environment and want to be involved, we really encourage you to get in touch."

From the public meeting, an initial two-pronged approach has been proposed, focusing on backyard trapping to reduce predators and also setting up trapping in public parks and reserves, as pest monitoring shows there are high predator numbers in these areas.

Tiakina Whangārei is keen to hear from people who would like support to set up a trapping group, in their street or around their local park, with all traps and advice provided.

Local schools are also getting behind the project. Raurimu Ave School students are completing pest surveys, bird counts and deploying rat traps along a section of the Waimahunga Track close to the school, and at Onerahi School, students have been targeting the George Point Road area, asking residents to maintain a backyard trap that the school supplies.

If you are keen to be involved in any of the above projects, please contact [info@tiakinawhangarei.co.nz](mailto:info@tiakinawhangarei.co.nz)

## Is your brand up to date

- Does it truly reflect your business?
- Does your brochure tell the world who you are and what you're selling or servicing!
- Are you even visible on the internet?



This is where we can help you...

**TOTAL IDEA CO**  
GRAPHIC DESIGN STUDIO

For effective results phone us on 09 438-1681 check us out at [totalidea.co.nz](http://totalidea.co.nz) or email [team@totalidea.co.nz](mailto:team@totalidea.co.nz)

Gateway to the North

**Whangarei Airport**

- Helicopter: TwinCoast
- Secure Parking provided by 'Lock and Fly'
- Recreational Flight Training and Flying
- Aircraft Maintenance
- The Apron Café

**Scheduled Air Services Linking to the World**

[www.whangareiairport.co.nz](http://www.whangareiairport.co.nz)

**Can you imagine a Predator Free Onerahi?**

This exciting project is now taking shape with some fantastic community action projects underway. If you're keen to get involved to help birds and other native species in Onerahi thrive, we'd love to hear from you!

**Keen to find out more?**

[info@tiakinawhangarei.co.nz](mailto:info@tiakinawhangarei.co.nz)  
[www.tiakinawhangarei.co.nz](http://www.tiakinawhangarei.co.nz)  
[facebook.com/TiakinaWhangarei](https://facebook.com/TiakinaWhangarei)

**Tiakina WHANGĀREI**

# Predator Free Whangārei

Predator Free Whangārei is a collaborative five year project that builds on years of dedicated and very successful community predator control in the Whangārei area.

This project is about further imagining what is possible for our district's flora and fauna when we remove the devastating effects of possums, mustelids and rats. This is an opportunity to engage our wider communities in the importance of this work by providing invaluable employment and education opportunities. This is also an opportunity to test and develop leading edge innovation for predator control and eradication, as we work towards creating one of New Zealand's first mainland possum-free zones at Whangārei Heads.

The next steps are critical. Project lead Ripley Dean says since securing funding, the project team has been working tirelessly to build foundations for the project. "It's now time to sit down with landowners, residents, hapū / whanau and community conservation groups to begin - or continue - vital conversations about how we're best able to make the most of this opportunity. For this project to succeed, it will need the support of many."

Ripley says the next few months will focus on engagement with landowners and the wider community.

"In December we will begin landowner engagement, continuing through until the end of January. Over the summer, we also aim to meet with all the existing landcare groups within the Whangārei Heads area to answer

questions and work through how we can complement the great predator control that is already happening in this area."

Public meetings and drop in sessions in Whangārei Heads will take place during February to give further opportunity for information sharing and a chance for the community to ask questions and learn more about the project. Dates and times will be advertised on the Northland Regional Council Facebook page and via the website: [www.nrc.govt.nz/pfwhangarei](http://www.nrc.govt.nz/pfwhangarei)

**TU AERIAL SERVICES**  
[www.tvas.co.nz](http://www.tvas.co.nz)  
 NORTHLAND AERIAL SPECIALIST

Two Years Guarantee • 25 Years Servicing Whangārei  
 SALES • SERVICE • INSTALLATION  
 Christian & Ethnic Satellite TV  
 Sound System • Domestic & Commercial  
 • Radio/FM

**FOR EXPERT ADVICE PHONE:**  
 MACK WILKINSON  
 Ph: (09) 436 0508  
 Mob: 021 992 974

**The Predator Free Whangārei team wishes everyone a safe and happy festive season!**

We look forward to continuing to work with you in the new year towards our goal of a predator free Whangārei!

For more info:  
[www.nrc.govt.nz/pfwhangarei](http://www.nrc.govt.nz/pfwhangarei)  
 e: [pfwhangarei@nrc.govt.nz](mailto:pfwhangarei@nrc.govt.nz)

**BLINDS SHUTTERS & CURTAINS WHANGĀREI**

Rollers Venetians Verticals  
 Shutters Curtains

Free in-home measure & quote  
 Free Installation

Phone 09 430 3535  
 Mob 0211 95 35 35

[gail@blindsandshutters.co.nz](mailto:gail@blindsandshutters.co.nz)  
[www.blindsandshutters.co.nz](http://www.blindsandshutters.co.nz)

**Beeswax Reusable Food Wraps**

An ecofriendly happier alternative to 'single use' plastic wraps and plastic bags ... that allow your food to BREATHE  
 Great for Fridge, Freezer, Pantry, Lunch Boxes & Picnics

**Starter Pack only \$30**

Order yours at [www.happywraps.nz](http://www.happywraps.nz) or pop in to **TopSail**  
 Or by appt 022 044 2130 - **Debbie**, Parua Bay  
 Made in Whangārei Heads, Northland

# Citizens Advice Bureau, Whangārei

We're still here! That's been the motto of Citizens Advice Bureau nationally over and beyond lockdown, a variation on the usual We're Here message, which points to all the different ways people can access our service – freephone, face to face, email, and live chat through the website [cab.org.nz](http://cab.org.nz).

We are definitely still here, in Whangārei, despite the fire in the Municipal Building and Covid-19 machinations. We learned a lot from the fire about working remotely, and with our new phone system able to send us emails containing voice messages, lockdown was a breeze.

**Citizens Advice Bureau**  
Te Pou Whakawhirinaki o Whangārei

**WE'RE HERE**  
**KEI KONEI MATOU**  
FOR FREE, CONFIDENTIAL  
INFORMATION & ADVICE

**CITIZENS ADVICE BUREAU WHANGĀREI,**  
69 Bank Street, Whangārei

e: [whangarei@cab.org.nz](mailto:whangarei@cab.org.nz)

Ph: 438 8046 or  
0800 367 222 (freephone)

[www.cab.org.nz](http://www.cab.org.nz)

**COFFEE is a Hug in a Mug**

**COFFEE & CAKE on the riverside**

**Kafé** That's café with a 'K' only in Whangārei

Riverside Drive Marina, Riverside Drive.

## Citizens Advice Bureau

Te Pou Whakawhirinaki o Whangārei

We are here now on the second floor of the beautiful Old Public Trust Building at 69 Bank Street, next door to our usual home. There is a lift! The entrance is between Thai Chef and Shosha. It is inaccessible to wheelchair users, but we can meet you at any location.

We still run our fortnightly Free Legal Advice Clinics, and the duty lawyer will ring anyone who does not wish to come to the bureau. You get about 15 minutes of free advice from the duty lawyers, but they cannot act for you in court or in any other matter.

We like to think we do a similar job – at least we should know whether you are really going to need to contract a lawyer, or whether you can work through whatever process it is with support.

We are here online too, through the live chat function on the website. Since Covid this service has more than doubled in popularity as a way of getting the advice people need for urgent employment, tenancy and parenting rights issues – our major categories.

We are here for benefit rights enquiries too, with our part-time beneficiary support worker ready to ensure people are getting everything they are legally entitled to receive in this turbulent time. We train our volunteers to be more than a listening ear – although that always helps. Our job is to make sure you understand the options available to you, whatever your current circumstances. No strings, free, confidential, independent advice. Not sure? Ask us.

» Business Cards  
» Flyers  
» Posters  
» Vinyl Labels  
» Books  
» Magazines  
» Letterheads  
» Folders  
» Invoice Books  
» Calendars  
» Pads  
» Rack Cards

AND MUCH MORE!  
ALL WORK GUARANTEED

0800 141 402 [f/jopprint](https://www.facebook.com/jopprint)  
info@jop.co.nz • www.jop.co.nz

**JOP**  
design | print | distribution

# The Taonga of Whangārei Heads

From the moment one crests the Brynderwyns, the outcrops of Whangārei Heads are distinctive in the landscape. Mt. Manaia, Mt. Aubrey, and Te Whara are the ancient remains of an andesitic super-volcano. Not just remarkable for their beauty, these outcrops also support unique biodiversity: four species are almost endemic to these promontories.

*Pseudowintera insperata* or Northland horopito is a Nationally Critical shrub or small tree (Figure 1). Its current stronghold is Whangārei Heads with two thirds of the wild populations found there, but was once found on many of the high points around Whangārei, from Maungatapere eastward. It is easily recognised by its round, glossy leaves and the conspicuous pale cream to yellow-green midvein seen in Figure 1.

Whangārei Heads daphne (*Pimelea acra*) was only recently described in 2009. Nearly endemic to the Heads it is found on Little Barrier Island, too. The name 'acra' (Greek for 'top' or 'extreme edge') acknowledges the habitat of this plant, mostly found on exposed headlands or cliffs. Figure 3 shows its daphne-like flowers.

*Pomaderris paniculosa* subspecies *novae-zelandiae* is a sprawling species of the *kūmarahou* genus. It is only found at North Cape on the Surville Cliffs and at Mt. Manaia. Because of this plant's narrow localisation it has been given the threat status of Nationally Endangered. The endemic subspecies is a plant of open rocky ground, cliff faces and rock pillars. At Mt. Manaia it is confined to the hardened andesite columns and the eroded rock beneath, as shown in Figure 2.

A true endemic to the Heads is *Celmisia graminifolia* (Figure 4), commonly called Whangārei Heads daisy. The species name 'graminifolia' refers to the apparent grass-like leaves illustrated in Figure 4. Whether this is a truly distinct species is still under debate but as it stands now, this tufted daisy is restricted to Whangārei Heads where it grows on steep, sparsely vegetated rock outcrops, cliff faces and tors along the ridgelines. Surprisingly this plant has also been recorded from rough pasture, reverting shrubland, and pine plantations, so is one to look out for.

Because of their ecology these plants are naturally rare, so protection for the remainder of these taonga is vitally important. While they are also at some risk from track installation and illegal plant collection, most are fairly inaccessible. The Whangārei Heads daphne and daisy would both be attractive species in a garden, and if brought into cultivation could work towards the conservation of these species locally. So next time you're out for a hike around the maunga of Whangārei Heads remember to keep an eye out for these special species!

Marley Ford, Paul Bell-Butler



Figure 1. Attractive foliage of Northland horopito (*Pseudowintera insperata*).



Figure 2. The typical form of the sprawling *Pomaderris paniculosa* subsp. *novae-zelandiae*.



Figure 3. The flowers of the Whangārei Heads daphne (*Pimelea acra*) are seen from July to October.



Figure 4. The large flowers of the Whangārei Heads daisy (*Celmisia graminifolia*).

[www.treework.co.nz](http://www.treework.co.nz) Branching Out Tree Care Ltd

**Tree Care Specialists**  
Qualified Arborist  
Ambassador for Trees - NZ Consultants, Practitioners & Data Collection

**Arborists – Tree Surgeons**  
Phone us for prompt, personal services & quality workmanship

- All Aspects of Tree Work
- Complete Removals & Cleanup
- Experienced & Qualified Crew
- Horticultural Industry Trainer
- Stump Grinding
- Public Liability Cover
- Chipping & Mulching
- Specialist Climbing Team
- Large and Difficult Trees
- Single or Massive Projects
- Will beat other Quotes by 5%

[www.treework.co.nz](http://www.treework.co.nz)  
**09 436 4466**  
Mobile: 027 565 7794 or 0508 ARBORIST  
Email: [p\\_r.gosling@xtra.co.nz](mailto:p_r.gosling@xtra.co.nz) (272 67478)

**PAUL GOSLING – ARBORIST**

# Onerahi to Sark Jules' (mis)adventures: Part 1

“Does anyone know where Sark is?”

The call went out. It was a dull afternoon in a quiet government department. We were all facing redundancies and we were keen for any distractions. After spending far too many years in the 8.00-5.00 world, I was seeking adventure, so on that dull afternoon I found it on The Lady website. There it was, an advertisement for an assistant in a small boutique hotel, La Sablonnerie, Sark, Channel Islands. It became a team event, that afternoon, and by the end of the day the general consensus was that I must apply – which I did – that night.

Eating my breakfast the following morning I noticed a phone message from an unknown number, which went something like this (must speak in a forced toff voice), “Oooo hellooooooo Jules from New Zealand, you MUST come, doooooooo come. When can you start?” (I would come to hear this many times, so much so that it would be like fingernails on a chalkboard, but I’m digressing). Well, at last, I thought, the Universe is providing. It’s meant to be. A simple click of my mouse changed my life. That was in August 2018 and by February 2019 I had taken that redundancy, packed up my Onerahi life, left a daughter and grandchildren behind, done some amazing tramps with my other daughter in the UK and finally found myself on a ferry from Guernsey to Sark.

I remember that 3.00pm crossing well. I remember it because I don’t think I have ever felt such loneliness. The ferry was full of Sarkees who all knew each other, they were laughing, having fun, the kids weren’t my grandchildren and I knew nobody, nobody at all. All I knew was that I would be picked up by Phil on his tractor and we would ride down to Little Sark with my far too many bags and to a place that had absolutely no familiarity. I sat in a corner and willed the tears not to come. I did some stern talking to myself. Jules, you will be one of these locals in time, you will be laughing with friends on that ferry, just give it time. The tears came.



My accommodation



La Sablonnerie



Life at The Falls Estate means spending time enjoying the things you love.

The Falls Estate isn't just retirement, but an appetite for living.

94 BOUNDARY ROAD, TIKIPUNGA, WHANGĀREI  
WWW.FALLSESTATE.CO.NZ



Wild seas of Sark

Phil was picking me up on a tractor because there are no cars on Sark. One needed a permit to drive a tractor, and a special permit to drive one on Sundays. The other transport options are walking (it takes about an hour to walk from one end of the island to the other), bikes, and horse and carts. There are also no street lights as Sark is designated a dark sky island. The roads are gravel and it is like stepping back in time, which of course, the tourists love. I’m just going to say at this point that dark nights, dirt roads, and a bicycle at 3.00am are the perfect excuses for falling off one’s bike 3 times on the way home, but I’m fast forwarding to another instalment....

So Phil was dutifully on the wharf waiting for Jules from New Zealand. Bless him, he didn’t mention once about the number of bags and their weight when he was heaving them off the ferry, up the steps and into the back of the tractor. I had to sit on the tractor gear stick; hmmm, I thought, is this a ploy and can I trust this guy? Well really, I don’t have a choice, I’m here now and I am reliant on Phil to help with my transition from Onerahi life to Sark life.

Phil showed me to my room – a lovely attic bedroom in an old Georgian house (albeit a ghastly pink) and I finally got to meet the Oooooo hellooooooo owner, Elizabeth. And so started the good, the bad, and the very ugly, about which, over time, you can read if you are interested.

I have gone over my 500 word limit but 500 words can’t begin to express the emotions, the reliance on the kindness of others, the fear and thus the courage that it takes to leap into a complete unknown. You have to have faith that things will work out. Things most certainly didn’t work out as expected, but gosh, this adventure became a real story waiting to be told. If you are interested you can read my blog, [julesfromnewzealand.com](http://julesfromnewzealand.com), or wait for the next instalment.

Jules Urbahn



**FLAMES**  
RESTAURANT, BAR AND GRILL


Open daily for breakfast and dinner

Featuring exciting seasonal menus, utilising delicious locally sourced produce in delightful taste combinations



Open 7 Days a Week • Closed Public Holidays  
Breakfast Mon to Fri 7 – 10am • Sat/Sun 7.30 – 10.30am  
Dinner 5.30 – 8.30pm  
8 Waverley St, Onerahi – 436 2107 – [info@flameshotel.co.nz](mailto:info@flameshotel.co.nz)  
[www.flameshotel.co.nz](http://www.flameshotel.co.nz)

## Simply Kids PRESCHOOL



45 Waverley Street, ONERAHI  
**09 436 2214**

Home from home, with a mini-farm and big outside adventure area.

• Excellence • Quality • Education • Care

# Onerahi Volunteer Fire Brigade Round-up

As usual, Onerahi Volunteer Fire Brigade has been busy.

1. The first call for October was on the 5th with the first (for the month) of two alarm activations at Raurimu School. The school alarm system is new; these systems sometimes take a little time to bed in. However, it's not always defective equipment. Ants getting in a sensor was the cause of the first incident.
2. 6 October: one person was hurt at a car accident, corner of Waikaraka Road & Heads Road.
3. The next day we assisted St John with a patient lift at Manganese Point.
4. 9 October: a car hit a power pole on Whangārei Heads Road.
5. It may not be well known, but any ambulance calls for cardiac arrest or respiratory difficulties will get Fire Brigade co-responded. We can arrive on the scene first. On 12 October we attended one such incident.
6. 12 October: fire/smoke reported in Raurimu area. It was a large rubbish fire.
7. 20 October: yet another car accident near the Parua Bay Cruising Club. The driver had to be lifted on a stretcher up a bank to the ambulance.
8. 23 October: smoke logged at a service station in Whangārei. This was an accidental activation of the anti-theft security smoke bomb.

9. 30 October: stove fire, Ngaio St. Cooking gone wrong.
10. 31 October: smoke reported (rubbish fire), Waikaraka.

In addition to all these calls, our firefighters attend weekly training every Tuesday night. Six members attended a rural fire training camp over a whole weekend early in October. Several are booked on other training courses coming up.

The dedication of our team committing so much time to not only train, but to drop whatever they are doing to attend fire call outs, is outstanding. Call outs are not only an imposition on their time but also on their family who may have their routines and plans disrupted.

As we move swiftly into the summer festive season please stay informed of the fire risk status. There are roadside signs, a very useful website: [checkitsalright.nz](http://checkitsalright.nz) and of course public notices in the newspapers. Moisture levels are not yet recovered from the drought, so we go into this season even more vulnerable than usual.

From all the team at Onerahi Volunteer Fire Brigade, we wish you a Merry Christmas and that 2021 brings us all a much less dramatic, and happy New Year.

Fire Chief, Mike Chubb

## Onerahi's Volunteer Firefighters: Aaron Cozens

Aaron joined us when not long out of school. After basic training was completed he moved house I think, and joined the Kamo Brigade. Now Aaron has moved back to Onerahi. We expected that young lad we remembered to come back, but of course he had matured into a man since we first met him, and plays a very active and valued role within the brigade. Aaron will very likely be a future leader of the brigade.

Mike Chubb, Fire Chief, Onerahi Fire Brigade



Aaron's Firefighter Sky Tower Stair Challenge

Ever since I was little I wanted to be a firefighter, so as soon as I turned 16 I went to the Onerahi Fire Station and joined up, and the training began. I now have a locker with my name on it.

After completing my recruit training, and going down to Rotorua for the firefighting course, I was able to ride in the fire truck and attend and assist at call-outs.

Through the years I have had some cool opportunities through the brigade. I have moved up the ranks to now be a qualified firefighter, and even managed to complete the Sky Tower Challenge last year.

Some of the call-outs are challenging, but it is really rewarding helping those in need.

I enjoy being a part of the Onerahi Fire Brigade as we have a close knit, supportive team that is passionate about keeping our community safe.

I recommend joining the Fire Service if you are keen to make a difference in your community and help those in need.

Aaron Cozens, Qualified Firefighter, Onerahi Fire Brigade.



## Onerahi Garage

WOF, REPAIRS,

SERVICING, CAMBELTS,

TYRES, BATTERIES,

BRAKES, WELDING,

NEW TRAILER SALES

PICK UP/DROP OFF, COURTESY CARS



1 CHURCH ST  
ONERAHI  
T. 09 436 5971



E. [admin@onerahigarage.co.nz](mailto:admin@onerahigarage.co.nz)

# Paul Mellor

027 436 1027  
[paul.mellor@harcourts.co.nz](mailto:paul.mellor@harcourts.co.nz)  
Harcourts Optimize Ltd Licensed REAA 2008

Call Paul for a FREE appraisal of your home






4
FOUR SQUARE

**PARUA BAY**  
**09 436 2740**  
*1379 Whangārei Heads Road, Parua Bay 0174*

## WELCOME TO OUR FOUR SQUARE

We're proud to be part of the long-standing iconic Kiwi brand that has been the local for New Zealand communities since 1924.

So whether you're keeping it local, or on tour, we're here to make it easy for you. Become a local, and shop where all Kiwis love to shop.

*Always welcome. Always local. Always Four Square.*

---

**Hours:**  
**Mon-Fri: 7:00am – 7:00pm**  
**Saturday: 7:00am – 7:00pm**  
**Sunday: 8:00am – 7:00pm**





## WHANGĀREI HEADS LANDSCAPE & SUPPLIES

- Aggregates • Garden Supplies
- Hire Equipment • Posts
- Firewood • Fencing Material
- Water & Drainage Pipe • Timber

09 436 5638

35 Pataua South Rd, Parua Bay

Open 8am – 5pm. 7 days.

email: [whlas@xtra.co.nz](mailto:whlas@xtra.co.nz),  
A/h: Charlie 027 552 2045.

Book review

# The Light is Inconsolable

Images: Diane Stoppard  
Poetry: Arthur Fairley

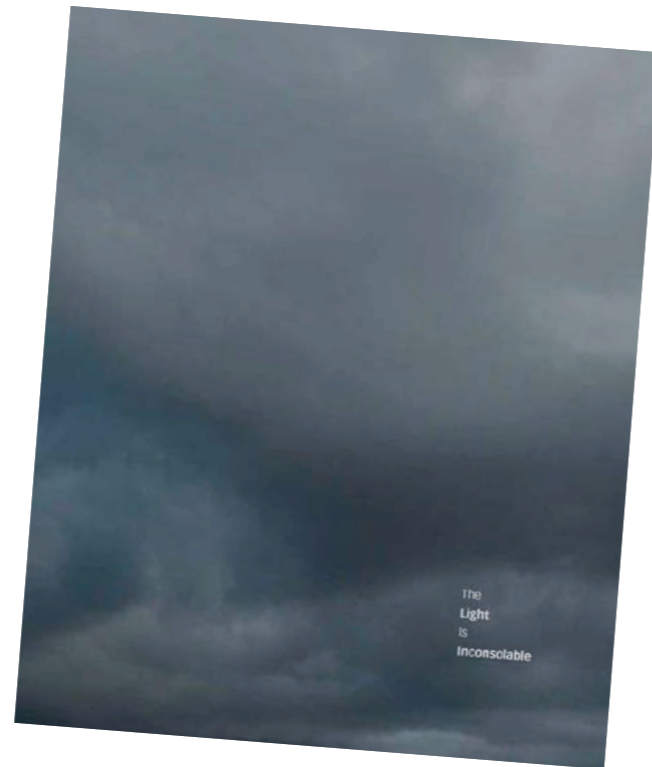
This book of poetry and images contains the work of two locals: professional photographer and artist Diane Stoppard, and poet and criminal lawyer Arthur Fairley.

Diane has carefully selected from Arthur's vast collection of poetry written over many years, choosing poems that resonated with her and reflected the theme of light. She has then crafted images using her black and white pinhole photographs of landscapes layered with her subtle coloured digital photographs. These quiet, dramatic portraits of the landscape sit between the poems, giving the reader/viewer time to pause and reflect on the poem's words and patterns on the page, and the patterns of light and dark in the images.

High production values show in heavyweight paper and a format and layout that leaves generous white space around each poem and image; a slender, clean typeface; and prints reminiscent of watercolour and time, as the ink seems to sink into its paper.

Hangar Gallery in Cross St, Regent, is hosting the book's launch on 26 November. The print run will be a limited edition of 100. Signed copies will be available from Hangar Gallery and Intec Interiors: \$75.

Heather Bell



# Whangārei Heads Weed Action Group - Winning the Battle

Kelly Maxwell, Project Coordinator for the Whangārei Heads Weed Action Group, believes that if you want to live in paradise, you have to contribute towards it.

Kelly is proud that in 2019 the dedicated team of volunteers contributed over \$100K worth of hours to the local community. The goal is to stop the spread of invasive weeds so all Northlanders can enjoy the unique natural environment. The group wants to see weed control happening from the smallest backyard to the slopes of Bream Head and Manaia.

With a background in environmental studies and a passion for forest restoration, Kelly was drawn to the group's great community initiatives, vision, and that it punched well above its weight. "I also liked that, as it was community driven, there was great buy-in from the community," she said.

The Whangārei Heads Weed Action Group helps landowners and community groups to access volunteers and funding, and tackle weed problems on their properties and in community reserves. It also provides tools and advice on how to deal with weeds. "Killing weeds can be easy if you know how and have the right stuff," Kelly says.

Ideally every resident will have "Weed Vision" so they can recognise invasive weed threats and do something about them. A good place to start is the "dirtiest dozen" weeds on the website: these are the big forest destroyers. Destruction of these weeds is timed for when it is most effective through the year. The current campaign is focused on flowering jasmine which spreads rapidly, then smothers and kills all other plants and trees.

The volunteer team meets to tackle a particular area most Wednesdays and a couple of weekends each month. Rick Hunter is one such volunteer who, after retiring, was keen to do something to enhance his local environment. He encourages anyone to come along and volunteer. "It is fun and no more hard work than you choose to make it; it gives you purpose and you get the feel-good factor of doing something useful. After a while you can see where a big patch of weed is now gone - like walking the Reotahi track where you can definitely see the change. The only downside is that I can now recognise all the weeds as I am driving!"

A major barrier to successful weed removal is re-invasion from bordering properties. Landowners are on the front line of the weed battle and are actively responsible for halting the spread of many weeds to the rest of the Heads. The group has been acting as the focal point for large groups of landowners. "This is successful as we get neighbours



One of the committed volunteers getting stuck in to weed removal

together, identify who is doing what, apply for funding if required, then support them, and work as a network to get the best result," says Kelly.

An initiative which has made a big difference is the Parua Bay Privet Buffer Project which aims to prevent the southward spread of tree privet from Parua Bay towards Ocean Beach and the rest of the peninsula. On over 100 hectares, committed neighbours and volunteers have made excellent progress in killing large seeding privet trees and reducing the seed burden for ongoing years. This is the first year of a five-year plan so keep watching this space!

The group is always on the lookout for more volunteers with a passion for environmental restoration - from those on the ground through to governance on the Board - especially someone to help navigate legal and health & safety aspects, and to help apply for grants and funding.

If you want to get involved, contact Volunteering Northland on 09-945-4984, info@volunteeringnorthland.nz or visit www.volunteeringnorthland.nz

Cindy Borrie, Volunteering Northland

**Funeral Trust**  
www.fdzfuneraltrust.co.nz  
Prearrange your funeral today with your FDANZ Funeral Director

**Morris & Morris Funerals**  
HONOURING LIVES FOR GENERATIONS

For more information about funeral planning and prepayment options, please contact  
**Morris & Morris Funerals**  
office@morrisandmorris.co.nz  
www.morrisandmorris.co.nz  
**09 437 5799**

Thinking of Selling?  
**KEEP CALM AND CALL**  
*Melanie Waldron*

**SOLD in only 5 days**  
9A Alamein Ave, Onerahi

**SOLD in only 21 days**  
2A Montgomery Ave, Onerahi

021 764 097  
@melaniewaldronEVESrealestate  
melanie.waldron@eves.co.nz

**EVES**  
**SPCA** Community Supporter

**PEPE'S DAIRY**  
Season's Greetings & Happy New Year to All

Mon-Fri: 7am - 8pm  
**OPEN 7 DAYS**  
Sat-Sun & Public Holidays: 8am-8pm

Onerahi Shopping Centre • 436 3600

**Paws oñ Cue**  
DOG GROOMING IN ONERAHI

Grooming  
Washing  
021 071 2885

laura.d.thomas@hotmail.com



# High Tide

## WHANGĀREI

Lat. 35° 46' S Long. 174° 21' E

### DECEMBER 2020

#### N.Z. LOCAL TIMES AND HEIGHTS OF HIGH AND LOW WATERS

| Time     | m        | Time      | m        | Time      | m        | Time      | m        |
|----------|----------|-----------|----------|-----------|----------|-----------|----------|
| <b>1</b> | 0304 0.7 | <b>9</b>  | 0300 2.7 | <b>17</b> | 0411 0.4 | <b>25</b> | 0504 2.5 |
| Tu       | 0933 2.9 | We        | 0903 0.8 | Th        | 1049 3.2 | Fr        | 1100 1.1 |
|          | 1527 0.9 |           | 1531 2.9 |           | 1643 0.6 |           | 1723 2.6 |
|          | 2141 2.8 |           | 2146 0.8 |           | 2304 3.0 |           | 2329 1.0 |
| <b>2</b> | 0343 0.7 | <b>10</b> | 0403 2.7 | <b>18</b> | 0500 0.5 | <b>26</b> | 0600 2.6 |
| We       | 1011 2.9 | Th        | 1005 0.8 | Fr        | 1138 3.2 | Sa        | 1154 1.1 |
|          | 1608 0.9 |           | 1630 2.9 |           | 1734 0.6 |           | 1812 2.6 |
|          | 2220 2.8 |           | 2245 0.7 |           | 2353 2.9 |           |          |
| <b>3</b> | 0423 0.7 | <b>11</b> | 0509 2.8 | <b>19</b> | 0547 0.6 | <b>27</b> | 0019 0.9 |
| Th       | 1049 2.9 | Fr        | 1108 0.8 | Sa        | 1227 3.1 | Su        | 0652 2.6 |
|          | 1649 0.9 |           | 1732 2.9 |           | 1824 0.7 |           | 1245 1.1 |
|          | 2300 2.8 |           | 2344 0.6 |           |          |           | 1900 2.6 |
| <b>4</b> | 0503 0.7 | <b>12</b> | 0614 2.9 | <b>20</b> | 0041 2.8 | <b>28</b> | 0106 0.9 |
| Fr       | 1129 2.9 | Sa        | 1210 0.8 | Su        | 0635 0.7 | Mo        | 0740 2.7 |
|          | 1732 0.9 |           | 1832 3.0 |           | 1315 3.0 |           | 1332 1.1 |
|          | 2342 2.8 |           |          |           | 1913 0.8 |           | 1946 2.7 |
| <b>5</b> | 0544 0.7 | <b>13</b> | 0041 0.5 | <b>21</b> | 0129 2.7 | <b>29</b> | 0151 0.8 |
| Sa       | 1210 2.9 | Su        | 0715 3.0 | Mo        | 0723 0.8 | Tu        | 0824 2.8 |
|          | 1816 0.9 |           | 1309 0.7 |           | 1403 2.9 |           | 1417 1.0 |
|          |          |           | 1930 3.0 |           | 2003 0.9 |           | 2031 2.7 |
| <b>6</b> | 0026 2.8 | <b>14</b> | 0137 0.5 | <b>22</b> | 0219 2.6 | <b>30</b> | 0234 0.8 |
| Su       | 0628 0.7 | Mo        | 0812 3.1 | Tu        | 0814 0.9 | We        | 0906 2.8 |
|          | 1255 2.9 |           | 1405 0.6 |           | 1452 2.8 |           | 1500 0.9 |
|          | 1904 0.9 |           | 2027 3.1 |           | 2054 0.9 |           | 2114 2.8 |
| <b>7</b> | 0113 2.7 | <b>15</b> | 0230 0.4 | <b>23</b> | 0311 2.6 | <b>31</b> | 0316 0.7 |
| Mo       | 0715 0.8 | Tu        | 0906 3.2 | We        | 0907 1.0 | Th        | 0947 2.9 |
|          | 1343 2.9 |           | 1459 0.6 |           | 1542 2.7 |           | 1544 0.9 |
|          | 1954 0.9 |           | 2121 3.1 |           | 2146 1.0 |           | 2158 2.8 |
| <b>8</b> | 0204 2.7 | <b>16</b> | 0322 0.4 | <b>24</b> | 0406 2.5 |           |          |
| Tu       | 0806 0.8 | We        | 0958 3.2 | Th        | 1003 1.1 |           |          |
|          | 1435 2.9 |           | 1552 0.6 |           | 1632 2.7 |           |          |
|          | 2048 0.8 |           | 2213 3.1 |           | 2238 1.0 |           |          |

Information courtesy of LINZ • www.linz.govt.nz



## WHANGAREI MARINE SERVICES

**CONFIDENCE FROM RELIABILITY**

Authorised dealer for Volvo Penta and Yanmar

**VOLVO PENTA**



09 438 3296 • 021 260 0792

admin@marinetechs.co.nz

93 Port Road, Whangārei



# High Tide

## WHANGĀREI

Lat. 35° 46' S Long. 174° 21' E

### FEBRUARY 2021

#### N.Z. LOCAL TIMES AND HEIGHTS OF HIGH AND LOW WATERS

| Time     | m        | Time      | m        | Time      | m        | Time      | m        |
|----------|----------|-----------|----------|-----------|----------|-----------|----------|
| <b>1</b> | 0505 0.5 | <b>9</b>  | 0638 2.9 | <b>17</b> | 0027 2.8 | <b>25</b> | 0039 0.9 |
| Mo       | 1135 3.1 | Tu        | 1230 0.9 | We        | 0623 0.8 | Th        | 0714 2.7 |
|          | 1738 0.6 |           | 1852 2.8 |           | 1251 2.9 |           | 1313 1.0 |
|          | 2355 3.0 |           |          |           | 1853 0.8 |           | 1927 2.7 |
| <b>2</b> | 0551 0.5 | <b>10</b> | 0055 0.7 | <b>18</b> | 0106 2.7 | <b>26</b> | 0132 0.8 |
| Tu       | 1220 3.1 | We        | 0737 2.9 | Th        | 0704 0.9 | Fr        | 0805 2.8 |
|          | 1825 0.6 |           | 1329 0.8 |           | 1327 2.8 |           | 1404 0.9 |
|          |          |           | 1951 2.8 |           | 1934 0.9 |           | 2021 2.8 |
| <b>3</b> | 0043 3.0 | <b>11</b> | 0151 0.7 | <b>19</b> | 0145 2.7 | <b>27</b> | 0221 0.7 |
| We       | 0639 0.6 | Th        | 0831 3.0 | Fr        | 0747 1.0 | Sa        | 0853 3.0 |
|          | 1307 3.1 |           | 1423 0.8 |           | 1404 2.7 |           | 1453 0.7 |
|          | 1914 0.6 |           | 2046 2.9 |           | 2017 0.9 |           | 2112 2.9 |
| <b>4</b> | 0132 3.0 | <b>12</b> | 0243 0.6 | <b>20</b> | 0227 2.6 | <b>28</b> | 0310 0.5 |
| Th       | 0730 0.6 | Fr        | 0921 3.1 | Sa        | 0834 1.1 | Su        | 0940 3.1 |
|          | 1356 3.1 |           | 1514 0.7 |           | 1445 2.6 |           | 1541 0.6 |
|          | 2004 0.6 |           | 2137 2.9 |           | 2102 1.0 |           | 2201 3.0 |
| <b>5</b> | 0226 2.9 | <b>13</b> | 0331 0.6 | <b>21</b> | 0316 2.5 |           |          |
| Fr       | 0824 0.7 | Sa        | 1008 3.1 | Su        | 0925 1.2 |           |          |
|          | 1448 3.0 |           | 1602 0.7 |           | 1532 2.6 |           |          |
|          | 2058 0.7 |           | 2224 2.9 |           | 2152 1.0 |           |          |
| <b>6</b> | 0325 2.8 | <b>14</b> | 0417 0.6 | <b>22</b> | 0414 2.5 |           |          |
| Sa       | 0923 0.8 | Su        | 1052 3.1 | Mo        | 1023 1.2 |           |          |
|          | 1544 2.9 |           | 1647 0.7 |           | 1626 2.5 |           |          |
|          | 2155 0.7 |           | 2308 2.9 |           | 2247 1.0 |           |          |
| <b>7</b> | 0429 2.8 | <b>15</b> | 0500 0.7 | <b>23</b> | 0517 2.5 |           |          |
| Su       | 1025 0.9 | Mo        | 1134 3.0 | Tu        | 1122 1.2 |           |          |
|          | 1645 2.8 |           | 1730 0.7 |           | 1727 2.5 |           |          |
|          | 2255 0.7 |           | 2349 2.9 |           | 2344 1.0 |           |          |
| <b>8</b> | 0535 2.8 | <b>16</b> | 0542 0.7 | <b>24</b> | 0619 2.6 |           |          |
| Mo       | 1129 0.9 | Tu        | 1213 2.9 | We        | 1219 1.1 |           |          |
|          | 1749 2.8 |           | 1812 0.7 |           | 1829 2.6 |           |          |
|          | 2356 0.7 |           |          |           |          |           |          |

Information courtesy of LINZ • www.linz.govt.nz



## AUTOMOTIVE & MARINE ELECTRICAL AND BATTERIES

**438 3063**

2 Herekino Street, Whangārei

rick@autotechnorth.co.nz

www.autotechnorth.co.nz



# Sail Northland's Summer Programme

## Services

**Rawleigh's**  
HEALTHCARE  
**COLLEEN DAVIES**  
INDEPENDENT RAWLEIGH'S DISTRIBUTOR.  
Phone. 09 4340920 • 0212861788  
Email cdandod@gmail.com

**09 436 0150**  
**09 436 5613**  
**W.H.A.T. AUTOMOTIVE**  
Your local professional automotive repair centre.  
whangarei.heads.autos@gmail.com  
[www.whatautomotive.nz](http://www.whatautomotive.nz)

## Church Services

### RAUMATI CRESCENT CHAPEL

**SUNDAY** 9.30am Communion Service  
11.00am Teaching Ministry

**MONDAY** 10.15am Sit Fit

**WEDNESDAY** (2nd) 10.30am Ladies' Bible Study  
(4th) 10.30am Ladies' Friendly Hour

**THURSDAY** (every 2nd) 1.30pm Knitting Group  
wool donations gladly accepted  
contact Maureen at 436 2355 for info.

### HOPEONERAHI PRESBYTERIAN CHURCH

**135 Onerahi Road • Office: 438 1667**  
Sunday Worship @ 9.30am. All Welcome!

Mainly Music in the Church Hall – Every Wednesday  
10am (during school term). \$4 per family

Contact Nancy Dodds - 436 1444

We have had a busy term so far with a range of courses for youth and adults at all levels to keep everyone busy. We are extremely lucky to have such a great team of coaches, volunteers, and support with running our programme.

Sail Northland Charitable Trust is holding a Breakaway School Holiday Programme during the coming school holidays at Whangārei Cruising Club, Parua Bay. This holiday programme is offered FREE to 11-18 year olds and there are limited spaces. Keep an eye out on our Facebook page or visit our website for more details. The dates are 14-18 December, 21-24 December 2020, and 18-22 January 2021.

Onerahi Lions Club has generously sponsored Raurimu School in Term 1 2021, and we are looking forward to the students attending and being part of our programme.



High school sailors Josh Smith & Bryn Hollis on Wednesday 4 November 2020  
Club Secretary, Sarah Ihaka

**SAIL NORTHLAND CHARITABLE TRUST**

### Breakaway Holiday Programme 14 - 18 December and 21-24 December 2020

**Time:** 10.00 - 2.30 pm  
**Dates:** Bookings are available between Monday 14 Dec - Friday 18 December and Monday 21 December - Thursday 24 December.  
**Location:** Parua Bay  
**Cost:** Free! Book early.  
**Email:** [sailnorthland@gmail.com](mailto:sailnorthland@gmail.com)  
**We have limited spaces so book NOW!**  
**Contact:** Roger Redmond 021747439

**What to Bring:**

- Togs and a towel
- Water bottle
- Packed lunch
- Sunscreen and a hat
- Wetsuit (if you have one)
- Beach/wet shoes to wear in the boat (old trainers are good for this)
- Warm change of clothes
- Wind Jacket

**SNT will have available:**

- Buoyancy Aid (or bring your own)
- Helmet

**NOTE:** Even if it is warm on shore it can be colder on the water. Never wear cotton or jeans when out sailing!

**School holiday Sailing week is designed to allow 11-18 year olds to experience the thrills of sailing in a fun, safe environment.**

**YOU MAY GET WET AND WILL HAVE A GREAT TIME!**

**Break-Away** family & community services  
School Holiday Programmes



## ONERAHI COMMUNITY CHURCH

Sundays 10am Raurimu Ave School Hall

... the name of Jesus ...  
there is no other name ...  
by which we must be saved.  
Acts 4:10-12

Contact: [hello.onecc@gmail.com](mailto:hello.onecc@gmail.com) - 021 023 897 01

# Sail Northland's Spring Regatta



Sail Northland Charitable Trust's sailing courses started getting back out on the water in Term 4 and are looking forward to another busy season.

High schools' teams gathered at Parua Bay in October for a 3 day spring regatta event to train and race against each other, as we started another sailing season.

**Day 1** - Completed 3 round robins and came off the water around 5 pm, with only one little hitch when the combined team couldn't reef their sails.

**Day 2** - Around lunchtime we had a spell where the wind dropped and everyone enjoyed time chilling in the sun, only to have the wind return at around 10 knots NE at about 2.30 pm. It was also lovely to have Lily Barton come and join the girls during the afternoon, and get to see what team sailing is all about.

**Day 3** - Remained on shore due to strong winds and not ideal conditions out on the water. We opted to use some time to cover more training skills with the students in 2 groups. Finished off the regatta around lunchtime after a quick wind-up and results were announced.

### Results:

- 1st: Whangārei Boys' High School
- 2nd: Macleans College
- 3rd: Whangārei Girls' High School
- 4th: Kerikeri High School
- 5th: Mahurangi College
- 6th: Combined.

Congratulations on another successful regatta and to all who were able to attend (students, parents and volunteers), and of course, to the winners, WBHS!  
Please visit [sailnorthland.org.nz](http://sailnorthland.org.nz) for more information.

Club Secretary, Sarah Ihaka

**CHURCH – who we are, not where we go!**

**ST STEPHEN'S ANGLICAN CHURCH**  
Text/call Paul Doherty 021 1894797

# Past Christmas Parade snapshots



# Coming Events

## Annual beach clean-up

**10.30 am, Saturday 12th December**

Volunteers wanted to help remove rocks from the beach beside the children's playground, Beach Rd, Onerahi. Each year rocks are exposed by tidal flow, so we remove them to make the swimming area more enjoyable. Please come and help for an hour or two.

## Sandwiches in the Sanctuary, December 2020

Dragonfly Springs end of year "Sandwiches in the Sanctuary" public open day (date TBA - watch Dragonfly Springs' Facebook page).

## Whangārei Cruising Club Centennial 2021

Join the celebrations to commemorate 100 years. Register your interest at [wcccentennial@gmail.com](mailto:wcccentennial@gmail.com)

## Onerahi Gala Day, April 11th 2021

Instead of the annual Christmas gala, the Onerahi Community Association proposes to hold a gala day in April for the community, if enough local clubs and organisations are interested. Please contact Bob Smith, ph 463 3681 for more info, or if your group is keen to be part of this fun festival.

## Venues available for hire in Onerahi/Parua Bay Area

|  |                  |                                   |
|--|------------------|-----------------------------------|
| Onerahi Community Hall & Community House | Julie Dennis     | 09 43 64439 or 021-034 9943       |
| Onerahi Bowling Club                     | Roger Kerr-Davis | 027 390 7185                      |
| Onerahi Rugby Club                       | Phiona Raymond   | onerahirugby@yahoo.com.           |
| Onerahi Soccer Club                      | Fiona Ellis      | onerahifootballclub@outlook.co.nz |
| Hope Church                              | Secretary        | 09 43 81 667                      |
| Raurimu School Hall                      | School Office    | 09 43 60 820 Ext. 2               |
| St. Stephen's Church Hall                | Paul Doherty     | 021 189 4797 or 09 43 60207       |
| Tamaterau Hall                           | Dorothy Gallan   | 09 43 63 093 or 021 190089        |
| Parua Bay Comm.Centre                    | Kirsty           | bjandkirsty@slingshot.co.nz       |
| Taurikura Hall                           | Meg Mclsaac      | 022 641 9786                      |

Christmas is all about family, friends, and a cozy home in which to enjoy them all.

Paul and the team at Uber Real Estate Ltd wish you & your family a happy, safe, and festive holiday!

*Your Onerahi expert*  
**PAUL THOMPSON**  
LICENSED SALESPERSON REAA 2008

Delivering **amazing** results!

---

027 651 2417  
[paul@uberrealestate.co.nz](mailto:paul@uberrealestate.co.nz)  
 9-11 Reyburn St, Whangārei 0110